

Baltimore City HIV/AIDS Epidemiological Profile

Fourth Quarter 2010

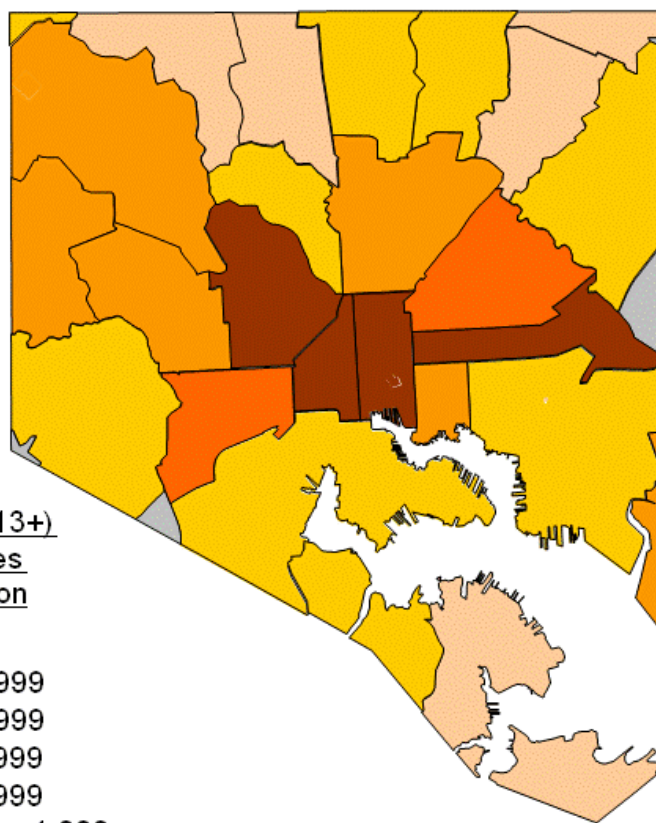
Data reported through December 31, 2010



Center for HIV Surveillance and Epidemiology
Infectious Disease and Environmental Health Administration
Maryland Department of Health and Mental Hygiene
<http://ideha.dhmmh.maryland.gov/chse/>
1-800-358-9001



Baltimore City Adult/Adolescent Total Living HIV Case Rates by ZIP Code Alive on 12/31/09



City Rate = 2,449.4 cases
per 100,000

Adult/Adolescent (Age 13+)
Total Living HIV Cases
per 100,000 population

- 4,000+
- 3,000 – 3,999
- 2,000 – 2,999
- 1,000 – 1,999
- 0 – 999
- Population <1,000

Using data as reported
through 12/31/2010

New On-line Mapping Tool: Please visit the new Maryland Infectious Disease and Environmental Health Administration website at the address above to use the new interactive mapping tool. You can create your own maps of adult/adolescent HIV rates by jurisdiction of residence, subset them by sex at birth and race/ethnicity, zoom in to the ZIP code level, plot the locations of HIV testing sites, and print out your custom map. The direct address for the mapping tool is:

<http://ideha.dhmmh.maryland.gov/apps/hiv/>

Table of Contents

Cover Figure – Map of Adult/Adolescent Total Living HIV Case Rates by ZIP Code, Alive on 12/31/2009	
Section I – Background Information	3
Section II – Trends 1985-2009	6
Figure 1 – Trends in Reported HIV and AIDS Diagnoses and Deaths, 1985-2009	6
Figure 2 – Trends in Living HIV Cases, 1985-2009	7
Figure 3 – Trends in Adult/Adolescent Reported HIV Diagnoses by Sex at Birth, 1985-2009	8
Figure 4 – Trends in Adult/Adolescent Reported HIV Diagnoses by Race/Ethnicity, 1985-2009	9
Figure 5 – Trends in Adult/Adolescent Reported HIV Diagnoses by Age at Diagnosis, 1985-2009	10
Figure 6 – Trends in Adult/Adolescent Reported HIV Diagnoses by Exposure Category, 1985-2009	11
Section III – Adult/Adolescent Cases by ZIP Code	12
Table 1 – Adult/Adolescent HIV Cases by ZIP Code, Diagnoses during 2009	12
Table 2 – Adult/Adolescent AIDS Cases by ZIP Code, Diagnoses during 2009	13
Table 3 – Adult/Adolescent HIV and AIDS Cases by ZIP Code, Alive on 12/31/2009	14
Table 4 – CD4 Testing for Adult/Adolescent HIV Cases by ZIP Code, Alive on 12/31/2009	15
Table 5 – HIV Viral Load Testing for Adult/Adolescent HIV Cases by ZIP Code, Alive 12/31/2009	16
Section IV – Cases by Age	17
Table 6 – HIV Cases by Age at Diagnosis, Diagnoses during 2009	17
Table 7 – AIDS Cases by Age at Diagnosis, Diagnoses during 2009	17
Table 8 – HIV Cases by Current Age, Alive on 12/31/2009	18
Table 9 – CD4 Testing for Adult/Adolescent HIV Cases by Current Age, Alive on 12/31/2009	19
Table 10 – HIV Viral Load Testing for Adult/Adolescent HIV Cases by Current Age, Alive on 12/31/2009	19
Section V – Adult/Adolescent Cases by Demographics	20
Table 11 – Adult/Adolescent HIV Cases by Demographics, Diagnoses during 2009	20
Table 12 – Adult/Adolescent AIDS Cases by Demographics, Diagnoses during 2009	21
Table 13 – Adult/Adolescent HIV Cases by Demographics, Alive on 12/31/2009	22
Table 14 – CD4 Testing for Adult/Adolescent HIV Cases by Demographics, Alive on 12/31/2009	23
Table 15 – HIV Viral Load Testing for Adult/Adolescent HIV Cases by Demographics, Alive on 12/31/2009	24
Section VI – HIV Cases by Expanded Demographics, Alive on 12/31/2009	25
Table 16 – Male HIV Cases by Current Age and Race/Ethnicity, Alive on 12/31/2009	25
Table 17 – Female HIV Cases by Current Age and Race/Ethnicity, Alive on 12/31/2009	26
Section VII – HIV Exposure Category	27
Table 18 – Adult/Adolescent HIV Cases by Exposure Category and Sex at Birth, Diagnoses during 2009	27
Table 19 – Adult/Adolescent AIDS Cases by Exposure Category and Sex at Birth, Diagnoses during 2009	28
Table 20 – Adult/Adolescent HIV Cases by Exposure Category and Sex at Birth, Alive on 12/31/2009	29
Table 21 – Adult/Adolescent HIV Cases by Exposure Category, Race/Ethnicity, and Sex at Birth, Alive on 12/31/2009	30
Table 22 – CD4 Testing for Adult/Adolescent HIV Cases by Exposure Category, Alive on 12/31/2009	31
Table 23 – HIV Viral Load Testing for Adult/Adolescent HIV Cases by Exposure Category, Alive on 12/31/2009	31
Section VIII – Disease Progression and Mortality	32
Figure 7 – Trends in Disease Progression by Year of HIV Diagnosis, 1985-2008	32
Figure 8 – Trends in Survival Times by Year of AIDS Diagnosis, 1985-2008	33
Section IX – Pediatric Cases	34
Figure 9 – Trends in Pediatric HIV Cases, 1985-2009	34
Table 24 – Pediatric HIV Cases by ZIP Code, Alive on 12/31/2009	35
Table 25 – Pediatric HIV Cases by Demographics, Alive on 12/31/2009	36

Section I – Background Information

HIV/AIDS Reporting Requirements

The Maryland HIV/AIDS Reporting Act of 2007 went into effect on April 24, 2007. The law expanded HIV/AIDS reporting and required that HIV cases be reported by name. The following highlights the reporting requirements of Health-General Articles 18-201.1, 18-202.1, and 18-205 of the Annotated Code of Maryland, as specified in COMAR 10.18.02.

- Physicians are required to report patients in their care with diagnoses of HIV or AIDS immediately to the Local Health Department where the physician's office is located by mailing DHMH Form 1140. Reports are also accepted by phone.
- Physicians are required to report infants born to HIV positive mothers within 48 hours to the State Health Department by mailing DHMH Form 1140. Reports are also accepted by phone.
- Clinical and infection control practitioners in hospitals, nursing homes, hospice facilities, medical clinics in correctional facilities, inpatient psychiatric facilities, and inpatient drug rehabilitation facilities are required to report patients in the care of the institution with diagnoses of HIV or AIDS within 48 hours to the Local Health Department where the institution is located by mailing DHMH Form 1140. Reports are also accepted by phone. Facilities with large volumes are encouraged to contact the State Health Department to establish electronic reporting.
- Laboratory directors are required to report patients with laboratory results indicating HIV infection (e.g., positive confirmatory HIV diagnostic tests, all CD4 immunological tests, all HIV viral load tests, and all HIV genotype and phenotype tests) within 48 hours to the Local Health Department where the laboratory is located, or if out of state to the Maryland State Health Department, by mailing DHMH Form 4492. Laboratories are encouraged to contact the State Health Department to establish electronic reporting.

Reporting forms and instructions are available on our website:
<http://ideha.dhmf.maryland.gov/chse/reporting-material.aspx>

For Assistance with HIV/AIDS Reporting

For assistance with reporting, including establishment of routine, electronic, or other alternate methods of reporting to the Health Department, please contact the Center for HIV Surveillance and Epidemiology at the Maryland Department of Health and Mental Hygiene (410-767-5061).

Limitations in the HIV/AIDS Data

This epidemiological profile only contains data for HIV and AIDS cases that have been diagnosed by a health care provider, were reported to the health department by name, and were residents of Maryland at the time of diagnosis. Nationally, it has been estimated that 21% of people living with HIV infection are undiagnosed. In addition, despite a massive effort during which over 17,000 HIV cases were reported after the Maryland HIV reporting law changed on April 24, 2007, not all diagnosed HIV cases previously reported by Maryland's code-based identifier were located and re-reported by name, so the number of living HIV cases is lower than previously reported. In addition, many of the re-reported HIV cases were identified by a recent diagnosis and not by their earliest diagnosis, resulting in an under-reporting of HIV diagnoses before 2001 and an over-reporting of HIV diagnoses from 2001 to 2008. Caution should be exercised in using the number of living HIV cases without AIDS and in interpreting trends in the number of reported HIV diagnoses. The laboratory data are only available for cases receiving medical care, usually only at facilities in Maryland, and only includes test results that have been reported to the health department.

Stages of a Case of HIV/AIDS

Untreated HIV disease progresses from HIV infection to AIDS to death. These are biological events that occur whether or not a person receives any medical care. For example, a person can be HIV infected but never have an HIV test and so they do not have an HIV diagnosis. A medical provider diagnoses that these biological events have occurred and records them as a medical event. The law requires medical providers to report these medical events to the Health Department, thereby creating a surveillance event.

Time Point	Biological Event	Medical Event	Surveillance Event
1	HIV Infection		
2		HIV Diagnosis	
3			HIV Report
4	AIDS Conditions		
5		AIDS Diagnosis	
6			AIDS Report
7	Death		
8		Death Diagnosis	
9			Death Report

A case of HIV/AIDS can only move through time in one direction, from HIV infection to death report [from time point 1 to time point 9], but may skip over individual stages. Events can occur simultaneously, but usually there is a time lag between them. The time lag between events can be measured in days, months, and years.

For example, the time between HIV infection [time point 1] and the test that diagnoses HIV [time point 2] may be several years, and it may then take several days for the laboratory and physician to report the diagnosis to the health department [time point 3]. In a second example, a person with diagnosed and reported HIV infection [time point 3] may die [time point 7] without developing AIDS, thereby skipping the three AIDS events (conditions, diagnosis, and report [time points 4, 5 and 6]). And in a third example, a person with undiagnosed HIV infection [time point 1] may become sick, enter the hospital, and die [time point 7] of what is later determined to be AIDS. In that situation, HIV diagnosis [time point 2], AIDS diagnosis [time point 5], and death diagnosis [time point 8] would all occur at the same time, and that would probably be many years after the initial HIV infection [time point 1].

Changes in Case Terminology

The terminology for HIV and AIDS cases was changed from earlier epidemiological profiles to be more precise, with Reported Diagnoses replacing Incidence and Living Cases replacing Prevalence. Incidence is a measure of the number of new events (such as HIV infections) in a population during a period of time. Prevalence is a measure of the number of people living with a condition (such as HIV) in a population at a certain time. Prevalence includes both new and old cases. For HIV, Incidence and Prevalence cannot be directly measured and must be estimated using statistical methods. The HIV surveillance system is able to provide the actual number of diagnoses and deaths that are reported in the population.

For this epidemiological profile, the reports received through a certain time (the end of the year) are used to generate the number of diagnoses during the prior years. This one year lag allows for delays in reporting and time to complete investigations. For example, the Reported HIV Diagnoses for 2009 are the total of the reported HIV cases with or without an AIDS diagnosis, diagnosed with HIV during 1/1/09-12/31/09, as reported by name through 12/31/10.

To calculate the number of Living Cases we count up all of the Reported Diagnoses from the beginning of the epidemic (all the new cases each year) and subtract all of the Reported Deaths. For example, the Total Living HIV Cases on 12/31/09 are the total of the reported HIV Cases with or without an AIDS diagnosis and not reported to have died as of 12/31/09 as reported by name through 12/31/10.

Changes in this Epidemiological Profile

There are numerous changes, including new types of data, from prior epidemiological profiles, all of which are intended to increase the utility of this report. We welcome your questions or feedback. The changes include:

- Separated the data for adults and adolescents (age 13+) from pediatric cases (age <13).
- Provided data on trends in pediatric cases.
- Expanded the categories and provided more specific labeling for race/ethnicity.
- Relabeled gender as sex at birth.
- Supplied data on cases by country of birth.
- Included new measures of the timeliness of HIV diagnosis, including median first CD4 count after HIV diagnosis, percent of HIV diagnoses that are diagnosed with AIDS within one year, average time from HIV diagnosis to AIDS diagnosis, and percent of AIDS diagnoses with an HIV diagnosis less than one year earlier.
- Provided laboratory data describing the care status and disease status of persons living with HIV, including the percent with CD4 and HIV viral load (VL) tests, the median value and distribution of CD4 counts, the percent with undetectable VL results, and the median detectable VL levels.
- Added data on trends in disease progression including percent of HIV diagnoses developing AIDS and years from HIV diagnosis to AIDS diagnosis.
- Expanded data on mortality, including trends in percent of AIDS diagnoses that have died, years from AIDS diagnosis to death, and percent alive by years after AIDS diagnosis.

Laboratory Data

CD4 tests are measures of a person's immune system function. An HIV infected person is considered to have AIDS if they have less than 200 CD4 cells per microliter of blood. Viral load (VL) tests are measures of the amount of HIV in a person's body. The goal of HIV treatment is to have a very low number of copies of virus per milliliter of blood, below what the test can measure, which is called an undetectable level. Treatment recommendations are that a person in HIV medical care should have their CD4 and VL levels measured at least 2-3 times per year. We use the presence of these lab tests as an indicator that someone has been linked to care after diagnosis or is "in care".

Sources of Data

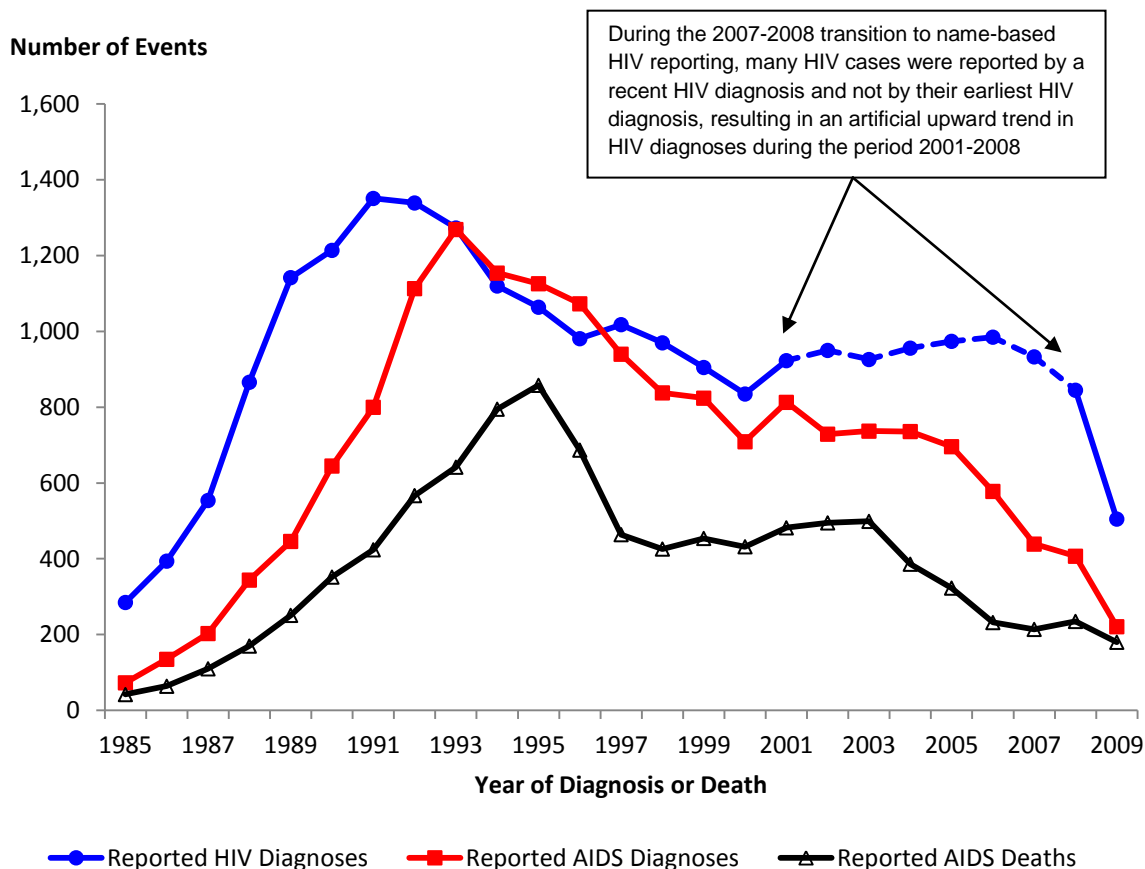
Information on HIV and AIDS diagnoses, including residence at diagnosis, age, race/ethnicity, sex at birth, country of birth, vital status, HIV exposure category, and CD4 and HIV viral load test results are from the Maryland Department of Health and Mental Hygiene's Enhanced HIV/AIDS Reporting System (eHARS), December 31, 2010.

Population data are from the Maryland Department of Planning's intercensal population estimates for July 1, 2009, or for country of birth and ZIP code of residence, projected forward to 2009 from the United States Census Bureau's 2000 Census figures.

Section II – Trends 1985-2009

Figure 1 – Trends in Reported HIV and AIDS Diagnoses and Deaths, 1985-2009

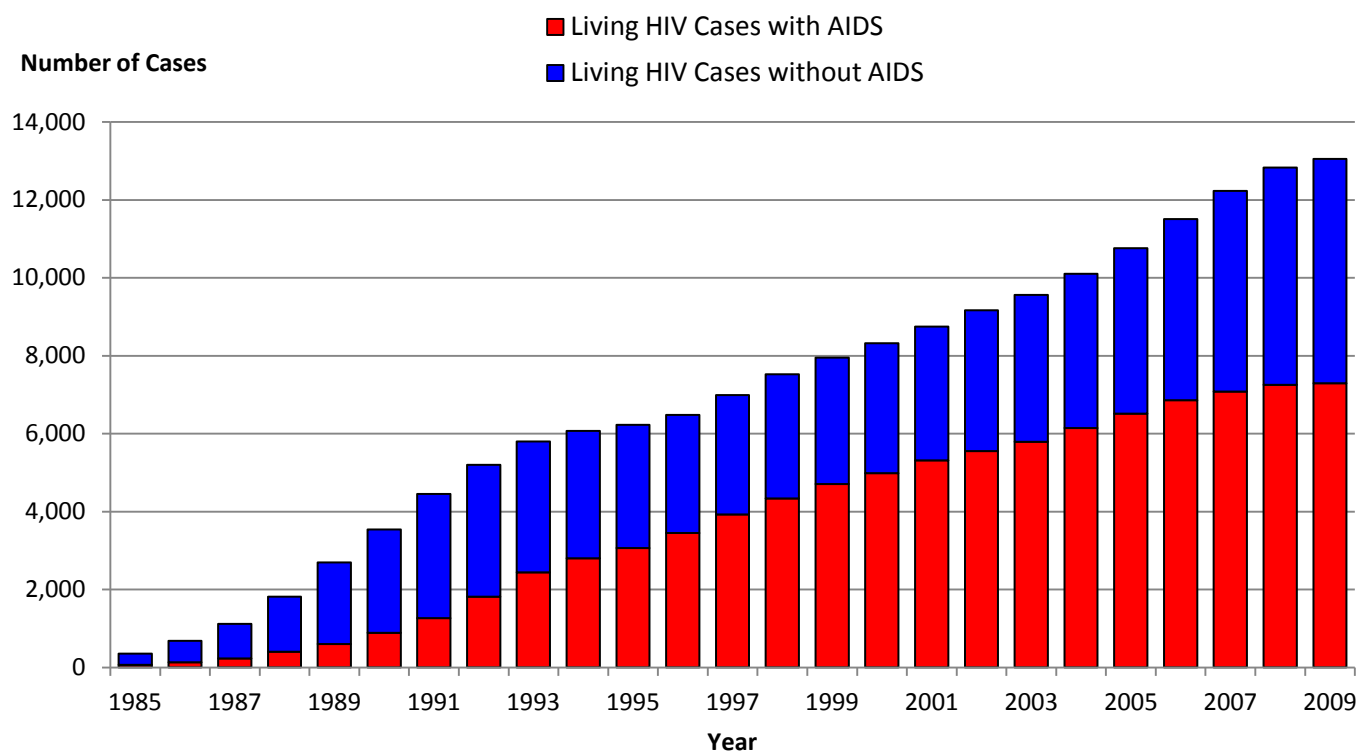
Reported HIV Cases with or without an AIDS Diagnosis (Reported HIV Diagnoses) by Year of HIV Diagnosis, Reported HIV Cases with an AIDS Diagnosis (Reported AIDS Diagnoses) by Year of AIDS Diagnosis, and Reported HIV Cases with an AIDS Diagnosis Reported to have Died of Any Cause (Reported AIDS Deaths) by Year of Death, from 1985 through 2009 as Reported by Name through 12/31/10.



YEAR OF DIAGNOSIS OR DEATH	Reported HIV Diagnoses	Reported AIDS Diagnoses	Reported AIDS Deaths	YEAR OF DIAGNOSIS OR DEATH	Reported HIV Diagnoses	Reported AIDS Diagnoses	Reported AIDS Deaths
<1985	129	55	23	1998	970	838	426
1985	285	73	42	1999	905	824	454
1986	394	135	64	2000	835	709	432
1987	554	203	110	2001	923	813	482
1988	866	344	170	2002	950	729	495
1989	1,142	446	251	2003	926	737	499
1990	1,214	645	352	2004	956	736	386
1991	1,351	800	424	2005	974	696	323
1992	1,339	1,113	567	2006	985	578	232
1993	1,273	1,269	642	2007	933	439	214
1994	1,120	1,154	795	2008	845	407	235
1995	1,064	1,126	858	2009	505	221	180
1996	981	1,073	687	TOTAL	23,437	17,103	9,807
1997	1,018	940	464				

Figure 2 – Trends in Living HIV Cases, 1985-2009

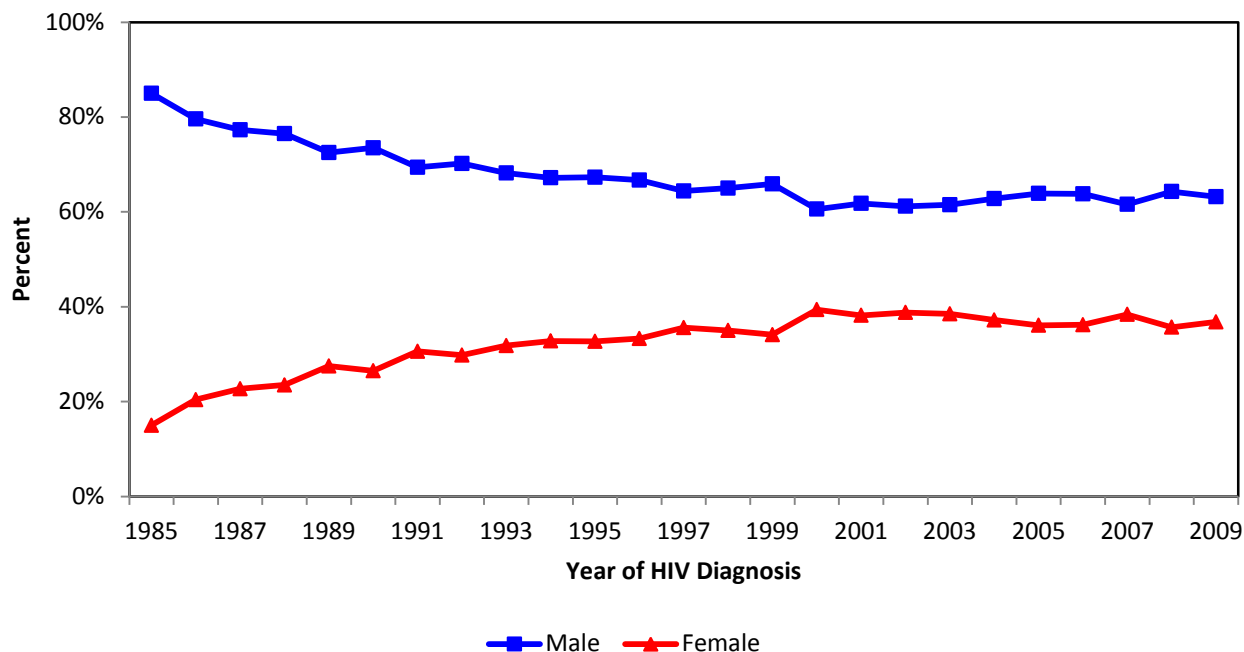
Reported HIV Cases with or without an AIDS Diagnosis and Not Reported to have Died as of December 31st of Each Year (Living HIV Cases without AIDS, Living HIV Cases with AIDS, and Total Living HIV Cases) from 1985 through 2009, as Reported by Name through 12/31/10



YEAR	Living HIV Cases without AIDS	Living HIV Cases with AIDS	Total Living HIV Cases	YEAR	Living HIV Cases without AIDS	Living HIV Cases with AIDS	Total Living HIV Cases
1985	288	63	351	1998	3,183	4,339	7,522
1986	546	134	680	1999	3,237	4,709	7,946
1987	893	227	1,120	2000	3,337	4,986	8,323
1988	1,413	401	1,814	2001	3,427	5,317	8,744
1989	2,095	596	2,691	2002	3,611	5,551	9,162
1990	2,653	889	3,542	2003	3,769	5,789	9,558
1991	3,186	1,265	4,451	2004	3,964	6,139	10,103
1992	3,386	1,811	5,197	2005	4,245	6,512	10,757
1993	3,360	2,438	5,798	2006	4,647	6,858	11,505
1994	3,275	2,797	6,072	2007	5,148	7,083	12,231
1995	3,161	3,065	6,226	2008	5,569	7,255	12,824
1996	3,032	3,451	6,483	2009	5,751	7,296	13,047
1997	3,064	3,927	6,991				

Figure 3 – Trends in Adult/Adolescent Reported HIV Diagnoses by Sex at Birth, 1985-2009

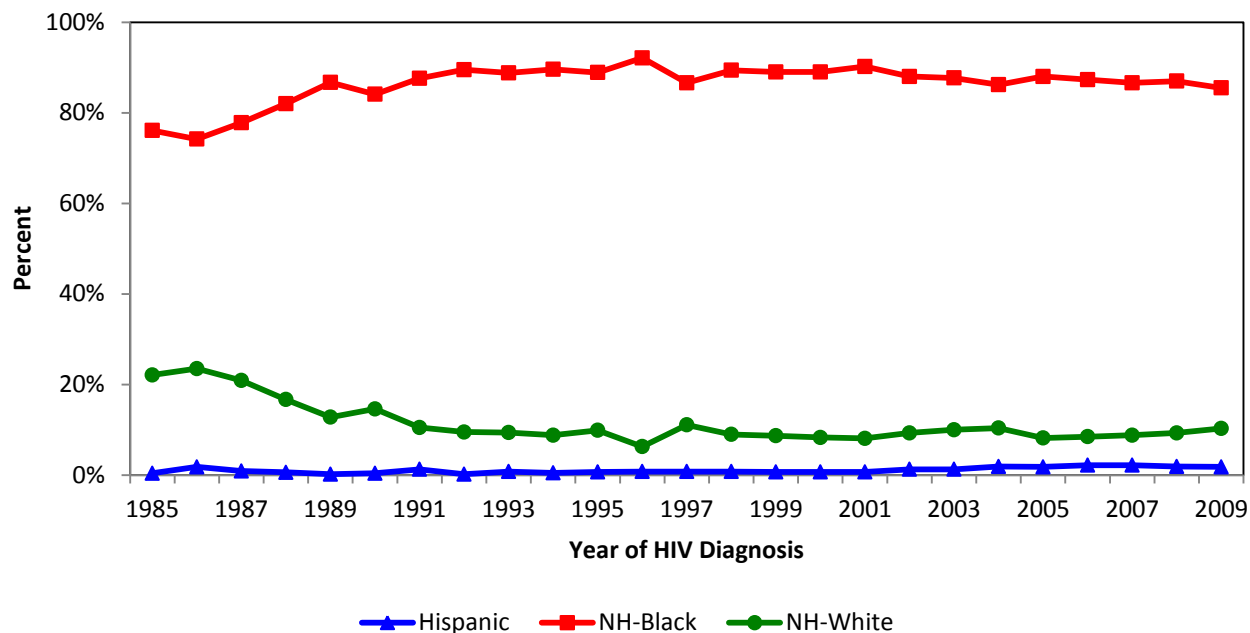
Percent by Sex at Birth of Adult/Adolescent Reported HIV Cases, Age 13+ at HIV Diagnosis, with or without an AIDS Diagnosis (Adult/Adolescent Reported HIV Diagnoses) by Year of HIV Diagnosis from 1985 through 2009, as Reported by Name through 12/31/10



YEAR OF HIV DIAGNOSIS	Adult/Adolescent Reported HIV Diagnoses			YEAR OF HIV DIAGNOSIS	Adult/Adolescent Reported HIV Diagnoses		
	No.	Percent Male	Percent Female		No.	Percent Male	Percent Female
<1985	127	85.8%	14.2%	1998	954	65.0%	35.0%
1985	280	85.0%	15.0%	1999	892	65.9%	34.1%
1986	388	79.6%	20.4%	2000	829	60.6%	39.4%
1987	541	77.3%	22.7%	2001	914	61.8%	38.2%
1988	850	76.5%	23.5%	2002	948	61.2%	38.8%
1989	1,122	72.5%	27.5%	2003	924	61.5%	38.5%
1990	1,185	73.5%	26.5%	2004	954	62.8%	37.2%
1991	1,318	69.4%	30.6%	2005	974	63.9%	36.1%
1992	1,305	70.2%	29.8%	2006	982	63.8%	36.2%
1993	1,236	68.2%	31.8%	2007	913	61.6%	38.4%
1994	1,098	67.2%	32.8%	2008	838	64.3%	35.7%
1995	1,048	67.3%	32.7%	2009	503	63.2%	36.8%
1996	967	66.7%	33.3%	TOTAL	23,102	67.2%	32.8%
1997	1,012	64.4%	35.6%				

Figure 4 – Trends in Adult/Adolescent Reported HIV Diagnoses by Race/Ethnicity, 1985-2009

Percent by Race/Ethnicity of Adult/Adolescent Reported HIV Cases, Age 13+ at HIV Diagnosis, with or without an AIDS Diagnosis (Adult/Adolescent Reported HIV Diagnoses) by Year of HIV Diagnosis from 1985 through 2009, as Reported by Name through 12/31/10

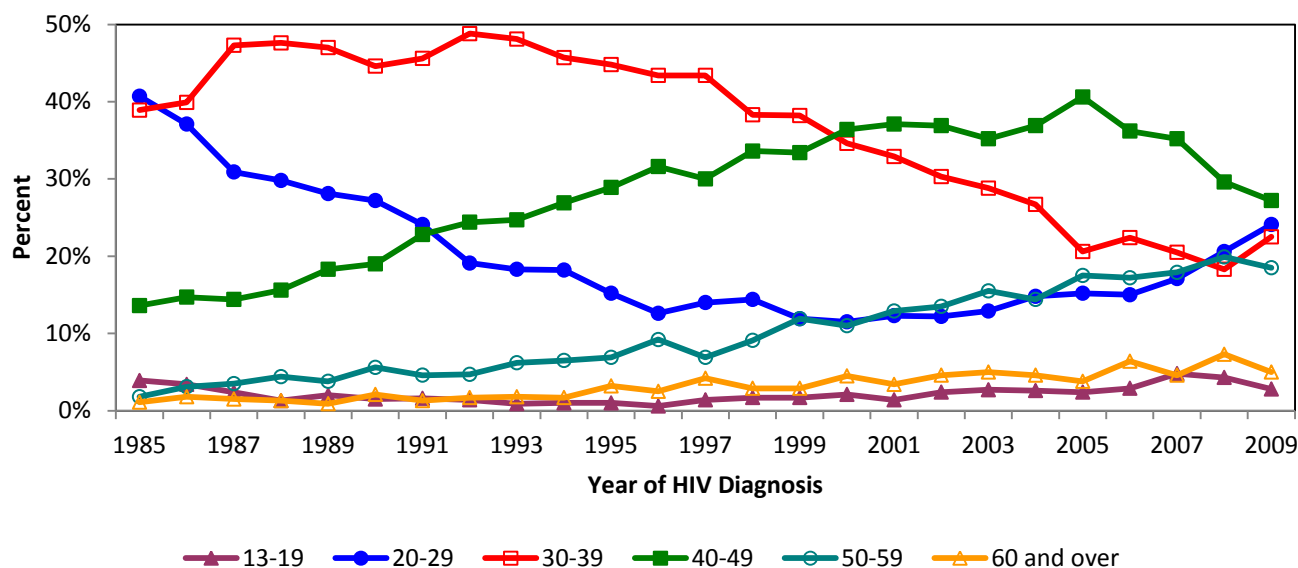


Non-Hispanic Other Race category not shown.

YEAR OF HIV DIAGNOSIS	Adult/Adolescent Reported HIV Diagnoses				
	No.	Percent Hispanic	Percent Non-Hispanic Black, only	Percent Non-Hispanic White, only	Percent Non-Hispanic Other Race
<1985	127	1.6%	60.6%	37.8%	0.0%
1985	280	0.4%	76.1%	22.1%	1.4%
1986	388	1.8%	74.2%	23.5%	0.5%
1987	541	0.9%	77.8%	20.9%	0.4%
1988	850	0.6%	82.0%	16.7%	0.7%
1989	1,122	0.2%	86.7%	12.8%	0.3%
1990	1,185	0.4%	84.1%	14.6%	0.9%
1991	1,318	1.3%	87.6%	10.5%	0.7%
1992	1,305	0.2%	89.5%	9.5%	0.8%
1993	1,236	0.8%	88.8%	9.4%	1.0%
1994	1,098	0.5%	89.6%	8.8%	1.0%
1995	1,048	0.7%	88.9%	9.9%	0.5%
1996	967	0.8%	92.1%	6.3%	0.7%
1997	1,012	0.8%	86.6%	11.1%	1.6%
1998	954	0.8%	89.4%	9.0%	0.7%
1999	892	0.7%	89.0%	8.7%	1.6%
2000	829	0.7%	89.0%	8.3%	1.9%
2001	914	0.7%	90.2%	8.1%	1.1%
2002	948	1.3%	88.0%	9.3%	1.5%
2003	924	1.3%	87.7%	10.0%	1.1%
2004	954	1.9%	86.2%	10.4%	1.6%
2005	974	1.8%	88.0%	8.2%	2.0%
2006	982	2.2%	87.3%	8.5%	2.0%
2007	913	2.2%	86.6%	8.8%	2.4%
2008	838	1.9%	87.0%	9.3%	1.8%
2009	503	1.8%	85.5%	10.3%	2.4%
TOTAL	23,102	1.0%	87.0%	10.8%	1.2%

Figure 5 – Trends in Adult/Adolescent Reported HIV Diagnoses by Age at Diagnosis, 1985-2009

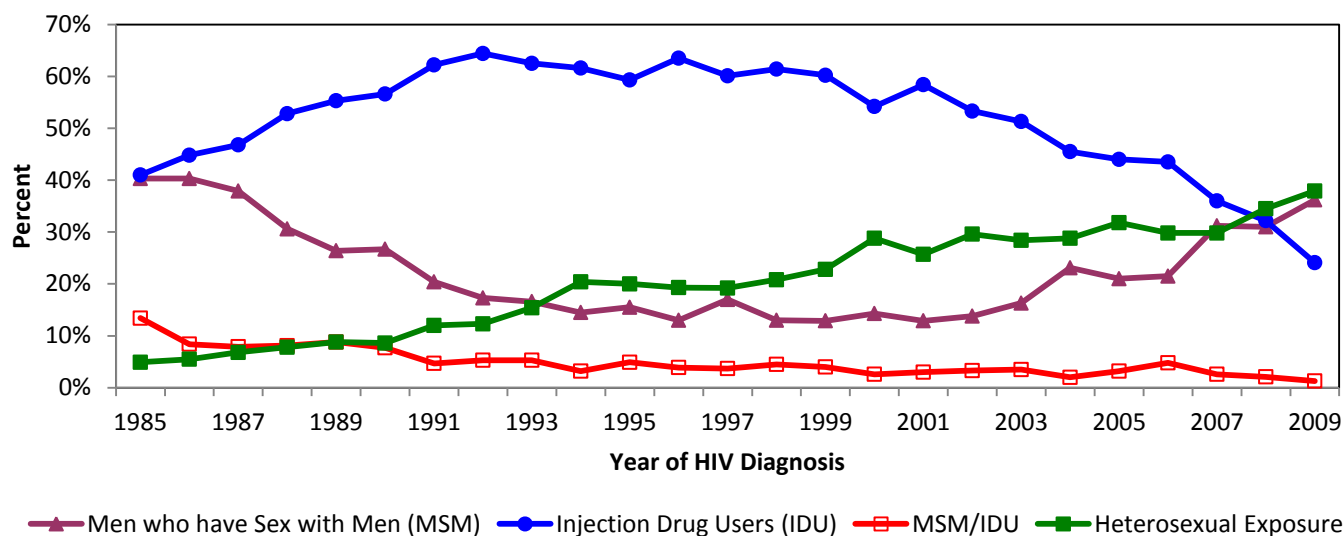
Percent by Age at HIV Diagnosis of Adult/Adolescent Reported HIV Cases, Age 13+ at HIV Diagnosis, with or without an AIDS Diagnosis (Adult/Adolescent Reported HIV Diagnoses) by Year of HIV Diagnosis from 1985 through 2009, as Reported by Name through 12/31/10



YEAR OF HIV DIAGNOSIS	Reported Adult/Adolescent HIV Diagnoses						
	No.	Percent Age 13-19	Percent Age 20-29	Percent Age 30-39	Percent Age 40-49	Percent Age 50-59	Percent Age 60+
<1985	127	3.1%	39.4%	31.5%	17.3%	7.9%	0.8%
1985	280	3.9%	40.7%	38.9%	13.6%	1.8%	1.1%
1986	388	3.4%	37.1%	39.9%	14.7%	3.1%	1.8%
1987	541	2.4%	30.9%	47.3%	14.4%	3.5%	1.5%
1988	850	1.3%	29.8%	47.6%	15.6%	4.4%	1.3%
1989	1,122	2.0%	28.1%	47.0%	18.3%	3.8%	0.9%
1990	1,185	1.5%	27.2%	44.6%	19.0%	5.6%	2.1%
1991	1,318	1.6%	24.1%	45.6%	22.8%	4.6%	1.3%
1992	1,305	1.4%	19.1%	48.8%	24.4%	4.7%	1.7%
1993	1,236	0.9%	18.3%	48.1%	24.7%	6.2%	1.8%
1994	1,098	1.0%	18.2%	45.7%	26.9%	6.5%	1.7%
1995	1,048	1.0%	15.2%	44.8%	28.9%	6.9%	3.2%
1996	967	0.6%	12.6%	43.4%	31.6%	9.2%	2.5%
1997	1,012	1.4%	14.0%	43.4%	30.0%	6.9%	4.2%
1998	954	1.7%	14.4%	38.3%	33.6%	9.1%	2.9%
1999	892	1.7%	11.9%	38.2%	33.4%	11.9%	2.9%
2000	829	2.1%	11.5%	34.6%	36.4%	11.0%	4.5%
2001	914	1.4%	12.3%	32.9%	37.1%	12.9%	3.4%
2002	948	2.4%	12.2%	30.3%	36.9%	13.5%	4.6%
2003	924	2.7%	12.9%	28.8%	35.2%	15.5%	5.0%
2004	954	2.6%	14.8%	26.7%	36.9%	14.4%	4.6%
2005	974	2.4%	15.2%	20.6%	40.6%	17.5%	3.8%
2006	982	2.9%	15.0%	22.4%	36.2%	17.2%	6.4%
2007	913	4.8%	17.1%	20.5%	35.2%	17.9%	4.6%
2008	838	4.3%	20.6%	18.3%	29.6%	19.9%	7.3%
2009	503	2.8%	24.1%	22.5%	27.2%	18.5%	5.0%
TOTAL	23,102	2.0%	18.8%	37.5%	28.7%	9.8%	3.2%

Figure 6 – Trends in Adult/Adolescent Reported HIV Diagnoses by Exposure Category, 1985-2009

Percent by Exposure Category of Adult/Adolescent Reported HIV Cases, Age 13+ at HIV Diagnosis, with or without an AIDS Diagnosis (Adult/Adolescent Reported HIV Diagnoses) and with Reported Exposure Category by Year of HIV Diagnosis from 1985 through 2009, as Reported by Name through 12/31/10



Other Exposure category not shown.

YEAR	Adult/Adolescent Reported HIV Diagnoses						
	No.	With Exposure Category					
		No.	Percent MSM	Percent IDU	Percent MSM/IDU	Percent HET	Percent Other Exposure
<1985	127	124	58.1%	30.6%	6.5%	4.0%	0.8%
1985	280	268	40.3%	41.0%	13.4%	4.9%	0.4%
1986	388	382	40.3%	44.8%	8.4%	5.5%	1.0%
1987	541	530	37.9%	46.8%	7.9%	6.8%	0.6%
1988	850	829	30.6%	52.8%	8.1%	7.8%	0.6%
1989	1,122	1,093	26.4%	55.3%	8.8%	8.8%	0.7%
1990	1,185	1,140	26.7%	56.6%	7.7%	8.6%	0.4%
1991	1,318	1,264	20.4%	62.2%	4.7%	12.0%	0.6%
1992	1,305	1,240	17.3%	64.4%	5.3%	12.3%	0.6%
1993	1,236	1,202	16.6%	62.5%	5.3%	15.4%	0.2%
1994	1,098	1,049	14.5%	61.6%	3.2%	20.4%	0.3%
1995	1,048	1,009	15.5%	59.3%	4.9%	20.0%	0.4%
1996	967	916	13.0%	63.5%	3.9%	19.3%	0.2%
1997	1,012	930	17.0%	60.1%	3.7%	19.2%	0.0%
1998	954	883	13.0%	61.4%	4.5%	20.8%	0.2%
1999	892	815	12.9%	60.2%	4.0%	22.8%	0.0%
2000	829	742	14.3%	54.2%	2.6%	28.8%	0.1%
2001	914	808	12.9%	58.4%	3.0%	25.7%	0.0%
2002	948	827	13.8%	53.3%	3.3%	29.6%	0.0%
2003	924	791	16.3%	51.3%	3.5%	28.4%	0.4%
2004	954	787	23.1%	45.5%	2.0%	28.8%	0.5%
2005	974	739	21.0%	44.0%	3.2%	31.8%	0.0%
2006	982	660	21.5%	43.5%	4.8%	29.8%	0.3%
2007	913	567	31.2%	36.0%	2.6%	29.8%	0.4%
2008	838	519	31.0%	32.2%	2.1%	34.5%	0.2%
2009	503	224	36.2%	24.1%	1.3%	37.9%	0.4%
TOTAL	23,102	20,338	20.7%	54.7%	4.8%	19.4%	0.3%

Section III – Adult/Adolescent Cases by ZIP Code

Table 1 – Adult/Adolescent HIV Cases by ZIP Code, Diagnoses during 2009

Age 13+ Population Estimate for 7/1/09, Number, Percent of Total, and Rate per 100,000 Population of Reported Adult/Adolescent HIV Cases, Age 13+ at HIV Diagnosis, with or without an AIDS Diagnosis, Diagnosed with HIV during 1/1/09-12/31/09 (Adult/Adolescent Reported HIV Diagnoses), Number and Percent by ZIP Code of Adult/Adolescent Reported HIV Diagnoses with a First Reported CD4 Test Result in the 12 Months following HIV Diagnosis (First CD4 Test Result) and Median Count of the First CD4 Test Results, Percent by ZIP Code of Adult/Adolescent Reported HIV Diagnoses with a Reported CD4 Test Result or a Reported HIV Viral Load Test Result in the 3 Months following HIV Diagnosis (Linked to Care), and Percent by ZIP Code of Adult/Adolescent Reported HIV Diagnoses with an AIDS Diagnosis in the 12 Months following HIV Diagnosis (Late HIV Diagnosis), by ZIP Code of Residence at HIV Diagnosis, as Reported by Name through 12/31/10

ZIP CODE OF RESIDENCE AT HIV DIAGNOSIS	Population Age 13+	Adult/Adolescent Reported HIV Diagnoses							% Linked to Care	% Late HIV Diagnosis
		No.	% of Total	Rate	First CD4 Test Result					
	No. with Test				% with Test	Median Count				
21201	13,277	29	5.8%	218.4	18	62.1%	396	51.7%	20.7%	
21202	20,826	41	8.2%	196.9	21	51.2%	398	48.8%	14.6%	
21205	14,105	22	4.4%	156.0	14	63.6%	362	45.5%	9.1%	
21206	31,540	17	3.4%	53.9	9	52.9%	498	41.2%	11.8%	
21207	11,862	10	2.0%	84.3	6	60.0%	330	60.0%	20.0%	
21208	1,356	0	0.0%	0.0	--	--	--	--	--	
21209	9,330	3	0.6%	32.2	***	***	***	***	***	
21210	9,651	0	0.0%	0.0	--	--	--	--	--	
21211	14,359	5	1.0%	34.8	***	***	***	***	***	
21212	20,557	1	0.2%	4.9	***	***	***	***	***	
21213	30,178	42	8.3%	139.2	24	57.1%	351	52.4%	21.4%	
21214	17,404	6	1.2%	34.5	5	83.3%	285	***	***	
21215	51,193	22	4.4%	43.0	14	63.6%	394	68.2%	***	
21216	29,162	37	7.4%	126.9	21	56.8%	294	40.5%	27.0%	
21217	33,039	60	11.9%	181.6	34	56.7%	330	51.7%	13.3%	
21218	46,784	58	11.5%	124.0	30	51.7%	206	46.6%	34.5%	
21222	1,127	0	0.0%	0.0	--	--	--	--	--	
21223	24,458	50	9.9%	204.4	28	56.0%	222	46.0%	26.0%	
21224	32,972	14	2.8%	42.5	10	71.4%	208	71.4%	35.7%	
21225	13,420	17	3.4%	126.7	8	47.1%	305	47.1%	***	
21226	2,518	1	0.2%	39.7	***	***	***	***	***	
21227	530	***	***	***	***	***	***	***	***	
21228	260	***	***	***	***	***	***	***	***	
21229	34,447	25	5.0%	72.6	16	64.0%	373	52.0%	***	
21230	27,489	12	2.4%	43.7	7	58.3%	289	58.3%	***	
21231	13,211	8	1.6%	60.6	***	***	***	***	***	
21234	6,772	1	0.2%	14.8	***	***	***	***	***	
21236	137	***	***	***	***	***	***	***	***	
21237	38	***	***	***	***	***	***	***	***	
21239	19,522	13	2.6%	66.6	11	84.6%	263	84.6%	***	
Missing	--	9	1.8%	--	7	77.8%	357	88.9%	***	
TOTAL	531,524	503	100.0%	94.6	296	58.8%	332	52.5%	22.1%	

*** Data withheld due to low population and/or case counts

Table 2 – Adult/Adolescent AIDS Cases by ZIP Code, Diagnoses during 2009

Age 13+ Population Estimate for 7/1/09, Number, Percent of Total, and Rate per 100,000 Population of Reported Adult/Adolescent HIV Cases, Age 13+ at HIV Diagnosis, with an AIDS Diagnosis, Diagnosed with AIDS during 1/1/09-12/31/09 (Adult/Adolescent Reported AIDS Diagnoses), and Average Years from HIV Diagnosis to AIDS Diagnosis, and Percent by ZIP Code of Adult/Adolescent Reported AIDS Diagnoses with an HIV Diagnosis in the 12 Months preceding AIDS Diagnosis (Late HIV Diagnosis), by ZIP Code of Residence at AIDS Diagnosis, as Reported by Name through 12/31/10

ZIP CODE OF RESIDENCE AT AIDS DIAGNOSIS	Population Age 13+	Adult/Adolescent Reported AIDS Diagnoses				
	No.	No.	% of Total	Rate	Years from HIV Diagnosis	% Late HIV Diagnosis
21201	13,277	10	4.5%	75.3	2	50.0%
21202	20,826	13	5.9%	62.4	9	7.7%
21205	14,105	9	4.1%	63.8	3.4	33.3%
21206	31,540	5	2.3%	15.9	1.4	80.0%
21207	11,862	3	1.4%	25.3	***	***
21208	1,356	0	0.0%	0.0	--	--
21209	9,330	4	1.8%	42.9	***	***
21210	9,651	0	0.0%	0.0	--	--
21211	14,359	4	1.8%	27.9	***	***
21212	20,557	0	0.0%	0.0	--	--
21213	30,178	21	9.5%	69.6	3.6	33.3%
21214	17,404	2	0.9%	11.5	***	***
21215	51,193	7	3.2%	13.7	1.4	85.7%
21216	29,162	23	10.5%	78.9	4.4	39.1%
21217	33,039	28	12.7%	84.7	2.5	46.4%
21218	46,784	28	12.7%	59.8	3.5	57.1%
21222	1,127	0	0.0%	0.0	--	--
21223	24,458	21	9.5%	85.9	4.1	57.1%
21224	32,972	5	2.3%	15.2	0	100.0%
21225	13,420	3	1.4%	22.4	***	***
21226	2,518	0	0.0%	0.0	--	--
21227	530	***	***	***	***	***
21228	260	***	***	***	***	***
21229	34,447	6	2.7%	17.4	3.1	66.7%
21230	27,489	11	5.0%	40.0	3.4	27.3%
21231	13,211	6	2.7%	45.4	4.1	33.3%
21234	6,772	***	***	***	***	***
21236	137	***	***	***	***	***
21237	38	***	***	***	***	***
21239	19,522	3	1.4%	15.4	***	***
Missing	--	6	2.7%	--	2.8	50.0%
TOTAL	531,524	220	100.0%	41.4	3.5	49.1%

*** Data withheld due to low population and/or case counts

Table 3 – Adult/Adolescent HIV and AIDS Cases by ZIP Code, Alive on 12/31/2009

Age 13+ Population Estimate for 7/1/09, Number, Percent of Total, and Rate per 100,000 Population of Reported Adult/Adolescent HIV Cases, Age 13+ at HIV Diagnosis, with or without an AIDS Diagnosis and Not Reported to Have Died as of 12/31/09 (Adult/Adolescent Living HIV Cases without AIDS, Living HIV Cases with AIDS, and Total Living HIV Cases), and Ratio of People per Case (1 case in every X people) for Total Living HIV Cases, by ZIP Code of Residence at the Latter of HIV or AIDS Diagnosis, as Reported by Name through 12/31/10

ZIP CODE OF RESIDENCE AT DIAGNOSIS	Population Age 13+	Adult/Adolescent Living HIV Cases without AIDS			Adult/Adolescent Living HIV Cases with AIDS			Adult/Adolescent Total Living HIV Cases			
	No.	No.	%	Rate	No.	%	Rate	No.	%	Rate	Ratio (1 in X)
21201	13,277	266	4.7%	2,003.5	342	4.8%	2,575.9	608	4.7%	4,579.3	21
21202	20,826	390	6.9%	1,872.7	524	7.3%	2,516.1	914	7.1%	4,388.7	22
21205	14,105	313	5.6%	2,219.1	370	5.1%	2,623.2	683	5.3%	4,842.3	20
21206	31,540	194	3.5%	615.1	266	3.7%	843.4	460	3.6%	1,458.5	68
21207	11,862	154	2.7%	1,298.3	180	2.5%	1,517.5	334	2.6%	2,815.7	35
21208	1,356	14	0.2%	1,032.4	3	0.0%	221.2	17	0.1%	1,253.7	79
21209	9,330	28	0.5%	300.1	31	0.4%	332.3	59	0.5%	632.4	158
21210	9,651	18	0.3%	186.5	11	0.2%	114.0	29	0.2%	300.5	332
21211	14,359	51	0.9%	355.2	85	1.2%	592.0	136	1.1%	947.1	105
21212	20,557	122	2.2%	593.5	162	2.3%	788.1	284	2.2%	1,381.5	72
21213	30,178	408	7.3%	1,352.0	569	7.9%	1,885.5	977	7.6%	3,237.5	30
21214	17,404	61	1.1%	350.5	93	1.3%	534.4	154	1.2%	884.9	113
21215	51,193	499	8.9%	974.7	629	8.7%	1,228.7	1,128	8.8%	2,203.4	45
21216	29,162	315	5.6%	1,080.2	477	6.6%	1,635.7	792	6.2%	2,715.9	36
21217	33,039	662	11.8%	2,003.7	845	11.8%	2,557.6	1,507	11.8%	4,561.3	21
21218	46,784	524	9.3%	1,120.0	676	9.4%	1,444.9	1,200	9.4%	2,565.0	39
21222	1,127	21	0.4%	1,863.4	2	0.0%	177.5	23	0.2%	2,040.8	49
21223	24,458	375	6.7%	1,533.2	515	7.2%	2,105.7	890	6.9%	3,638.9	27
21224	32,972	198	3.5%	600.5	221	3.1%	670.3	419	3.3%	1,270.8	78
21225	13,420	122	2.2%	909.1	141	2.0%	1,050.7	263	2.1%	1,959.8	51
21226	2,518	10	0.2%	397.1	15	0.2%	595.7	25	0.2%	992.9	100
21227	530	***	***	***	***	***	***	***	***	***	***
21228	260	***	***	***	***	***	***	***	***	***	***
21229	34,447	265	4.7%	769.3	353	4.9%	1,024.8	618	4.8%	1,794.1	55
21230	27,489	161	2.9%	585.7	192	2.7%	698.5	353	2.8%	1,284.2	77
21231	13,211	138	2.5%	1,044.6	189	2.6%	1,430.6	327	2.6%	2,475.2	40
21234	6,772	20	0.4%	295.3	31	0.4%	457.8	51	0.4%	753.1	132
21236	137	***	***	***	***	***	***	***	***	***	***
21237	38	***	***	***	***	***	***	***	***	***	***
21239	19,522	130	2.3%	665.9	158	2.2%	809.3	288	2.2%	1,475.3	67
Missing	--	92	1.6%	--	88	1.2%	--	180	1.4%	--	--
TOTAL	531,524	5,620	100%	1,057.3	7,189	100%	1,352.5	12,809	100.0%	2,409.9	41

*** Data withheld due to low population and/or case counts

Table 4 – CD4 Testing for Adult/Adolescent HIV Cases by ZIP Code, Alive on 12/31/2009

Number of Adult/Adolescent Reported HIV Cases, Age 13+ at HIV Diagnosis, with or without an AIDS Diagnosis and Not Reported to Have Died as of 12/31/09 (Adult/Adolescent Total Living HIV Cases), Number and Percent by ZIP Code of Adult/Adolescent Total Living HIV Cases with a Reported CD4 Test Result in the Previous 12 Months (Recent CD4 Test Result), and Median Count in Cells per Microliter and Percent Distribution by ZIP Code of Counts for the Last Recent CD4 Test Results, by ZIP Code of Residence at the Latter of HIV or AIDS Diagnosis, as Reported by Name through 12/31/10

ZIP CODE OF RESIDENCE AT DIAGNOSIS	Adult/Adolescent Total Living HIV Cases							
	No.	Recent CD4 Test Result						
		No. with Test	% with Test	Median Count	<200	200-349	350-499	500+
21201	608	80	13.2%	364	32.5%	17.5%	18.8%	31.3%
21202	914	107	11.7%	324	40.2%	11.2%	16.8%	31.8%
21205	683	63	9.2%	407	25.4%	19.0%	12.7%	42.9%
21206	460	60	13.0%	318	35.0%	16.7%	20.0%	28.3%
21207	334	47	14.1%	317	40.4%	14.9%	23.4%	21.3%
21208	17	0	0.0%	--	--	--	--	--
21209	59	9	15.3%	183	55.6%	0.0%	***	***
21210	29	***	***	***	***	***	***	***
21211	136	20	14.7%	255	40.0%	30.0%	***	***
21212	284	38	13.4%	336	28.9%	23.7%	15.8%	31.6%
21213	977	131	13.4%	269	39.7%	24.4%	15.3%	20.6%
21214	154	24	15.6%	292	29.2%	33.3%	***	***
21215	1,128	136	12.1%	362	26.5%	21.3%	19.1%	33.1%
21216	792	133	16.8%	252	39.8%	18.8%	15.0%	26.3%
21217	1,507	296	19.6%	312	34.1%	19.9%	17.2%	28.7%
21218	1,200	153	12.8%	266	39.2%	24.2%	14.4%	22.2%
21222	23	***	***	***	***	***	***	***
21223	890	138	15.5%	280	38.4%	18.8%	17.4%	25.4%
21224	419	46	11.0%	361	32.6%	15.2%	28.3%	23.9%
21225	263	36	13.7%	317	36.1%	19.4%	25.0%	19.4%
21226	25	***	***	***	***	***	***	***
21227	***	***	***	***	***	***	***	***
21228	***	***	***	***	***	***	***	***
21229	618	94	15.2%	343	27.7%	26.6%	18.1%	27.7%
21230	353	42	11.9%	403	35.7%	***	***	35.7%
21231	327	33	10.1%	344	36.4%	15.2%	18.2%	30.3%
21234	51	7	13.7%	303	***	***	***	***
21236	***	***	***	***	***	***	***	***
21237	***	***	***	***	***	***	***	***
21239	288	43	14.9%	291	27.9%	32.6%	18.6%	20.9%
Missing	180	20	11.1%	171	55.0%	***	***	***
TOTAL	12,809	1,767	13.8%	310	35.1%	20.0%	17.4%	27.5%

*** Data withheld due to low population and/or case counts

Table 5 – HIV Viral Load Testing for Adult/Adolescent HIV Cases by ZIP Code, Alive 12/31/2009

Number of Adult/Adolescent Reported HIV Cases, Age 13+ at HIV Diagnosis, with or without an AIDS Diagnosis and Not Reported to Have Died as of 12/31/09 (Adult/Adolescent Total Living HIV Cases), Number and Percent by ZIP Code of Adult/Adolescent Total Living HIV Cases with a Reported HIV Viral Load Test Result in the Previous 12 Months (Recent Viral Load Test Result), Percent by ZIP Code of the Last Recent Viral Load Test Results that were Undetectable, and the Median Detectable Result in Copies per Milliliter, by ZIP Code of Residence at the Latter of HIV or AIDS Diagnosis, as Reported by Name through 12/31/10

ZIP CODE OF RESIDENCE AT DIAGNOSIS	Adult/Adolescent Total Living HIV Cases				
	No.	Recent Viral Load Test Result			
		No. with Test	% with Test	% Undetectable	Median Detectable
21201	608	58	9.5%	10.3%	4,821
21202	914	69	7.5%	7.2%	19,078
21205	683	43	6.3%	***	7,849
21206	460	31	6.7%	***	41,321
21207	334	42	12.6%	26.2%	3,887
21208	17	0	0.0%	--	--
21209	59	11	18.6%	***	57,243
21210	29	***	***	***	***
21211	136	11	8.1%	***	83,670
21212	284	18	6.3%	***	1,017
21213	977	94	9.6%	8.5%	8,489
21214	154	13	8.4%	***	743
21215	1,128	118	10.5%	22.0%	2,822
21216	792	87	11.0%	12.6%	7,820
21217	1,507	176	11.7%	9.1%	4,823
21218	1,200	109	9.1%	14.7%	5,842
21222	23	***	***	***	***
21223	890	100	11.2%	12.0%	11,342
21224	419	28	6.7%	17.9%	11,359
21225	263	22	8.4%	***	3,760
21226	25	***	***	***	***
21227	***	***	***	***	***
21228	***	***	***	***	***
21229	618	64	10.4%	20.3%	9,823
21230	353	28	7.9%	0.0%	4,817
21231	327	22	6.7%	***	14,030
21234	51	***	***	***	***
21236	***	***	***	***	***
21237	***	***	***	***	***
21239	288	26	9.0%	***	11,139
Missing	180	17	9.4%	***	4,958
TOTAL	12,809	1,199	9.4%	13.0%	7,327

*** Data withheld due to low population and/or case counts

Section IV – Cases by Age

Table 6 – HIV Cases by Age at Diagnosis, Diagnoses during 2009

Population Estimate for 7/1/09, Number, Percent of Total, and Rate per 100,000 Population of Reported HIV Cases with or without an AIDS Diagnosis, Diagnosed with HIV during 1/1/09-12/31/09 (Reported HIV Diagnoses), Number and Percent by Age Group of Reported HIV Diagnoses with a First Reported CD4 Test Result in the 12 Months following HIV Diagnosis (First CD4 Test Result) and Median Count of the First CD4 Test Results, Percent by Age Group of Reported HIV Diagnoses with a Reported CD4 Test Result or a Reported HIV Viral Load Test Result in the 3 Months following HIV Diagnosis (Linked to Care), and Percent by Age Group of Reported HIV Diagnoses with an AIDS Diagnosis in the 12 Months following HIV Diagnosis (Late HIV Diagnosis), by Age at HIV Diagnosis, as Reported by Name through 12/31/10

AGE AT HIV DIAGNOSIS	Population	Reported HIV Diagnoses							
	No.	No.	% of Total	Rate	First CD4 Test Result			% Linked to Care	% Late Diagnosis
					No. with Test	% with Test	Median Count		
<5 (Pediatric)	45,379	2	0.4%	4.4	***	***	***	***	***
5-12 (Pediatric)	60,515	0	0.0%	0.0	--	--	--	--	--
13-19	59,169	14	2.8%	23.7	***	***	***	***	***
20-29	109,893	121	24.0%	110.1	81	66.9%	340	62.8%	13.2%
30-39	91,834	113	22.4%	123.0	60	53.1%	347	41.6%	16.8%
40-49	84,258	137	27.1%	162.6	80	58.4%	260	53.3%	27.0%
50-59	80,651	93	18.4%	115.3	54	58.1%	350	51.6%	26.9%
60+	105,719	25	5.0%	23.6	17	68.0%	192	64.0%	52.0%
TOTAL	637,418	505	100.0%	79.2	297	58.8%	332	52.7%	22.0%

*** Data withheld due to low population and/or case counts

Table 7 – AIDS Cases by Age at Diagnosis, Diagnoses during 2009

Population Estimate for 7/1/09, Number, Percent of Total, and Rate per 100,000 Population of Reported HIV Cases with an AIDS Diagnosis, Diagnosed with AIDS during 1/1/09-12/31/09 (Reported AIDS Diagnoses), and Average Years from HIV Diagnosis to AIDS Diagnosis, and Percent by Age Group of Reported AIDS Diagnoses with an HIV Diagnosis in the 12 Months preceding AIDS Diagnosis (Late HIV Diagnosis), by Age at AIDS Diagnosis, as Reported by Name through 12/31/10

AGE AT AIDS DIAGNOSIS	Population	Reported AIDS Diagnoses				
	No.	No.	% of Total	Rate	Years from HIV Diagnosis	% Late HIV Diagnosis
<5 (Pediatric)	45,379	0	0.0%	0.0	--	--
5-12 (Pediatric)	60,515	0	0.0%	0.0	--	--
13-19	59,169	1	0.5%	1.7	***	***
20-29	109,893	33	14.9%	30.0	2.2	57.6%
30-39	91,834	42	19.0%	45.7	3.7	38.1%
40-49	84,258	76	34.4%	90.2	4.7	43.4%
50-59	80,651	47	21.3%	58.3	3.3	48.9%
60+	105,719	22	10.0%	20.8	***	***
TOTAL	637,418	221	100.0%	34.7	3.6	48.9%

Table 8 – HIV Cases by Current Age, Alive on 12/31/2009

Population Estimate for 7/1/09, Number, Percent of Total, and Rate per 100,000 Population of Reported HIV Cases with or without an AIDS Diagnosis and Not Reported to Have Died as of 12/31/09 (Living HIV Cases without AIDS, Living HIV Cases with AIDS, and Total Living HIV Cases), and Ratio of People per Case (1 case in every X people) for Total Living HIV Cases, by Age on 12/31/09, as Reported by Name through 12/31/10

AGE ON 12/31/09	Population	Living HIV Cases without AIDS			Living HIV Cases with AIDS			Total Living HIV Cases			
	No.	No.	%	Rate	No.	%	Rate	No.	%	Rate	Ratio (1 in X)
<5 (Pediatric)	45,379	15	0.3%	33.1	1	0.0%	2.2	16	0.1%	35.3	2,836
5-12 (Pediatric)	60,515	32	0.6%	52.9	10	0.1%	16.5	42	0.3%	69.4	1,440
13-19	59,169	102	1.8%	172.4	60	0.8%	101.4	162	1.2%	273.8	365
20-29	109,893	655	11.4%	596.0	305	4.2%	277.5	960	7.4%	873.6	114
30-39	91,834	964	16.8%	1,049.7	840	11.5%	914.7	1,804	13.8%	1,964.4	50
40-49	84,258	1,912	33.2%	2,269.2	2,744	37.6%	3,256.7	4,656	35.7%	5,525.9	18
50-59	80,651	1,522	26.5%	1,887.1	2,528	34.6%	3,134.5	4,050	31.0%	5,021.6	19
60+	105,719	549	9.5%	519.3	808	11.1%	764.3	1,357	10.4%	1,283.6	77
TOTAL	637,418	5,751	100.0%	902.2	7,296	100.0%	1,144.6	13,047	100.0%	2,046.9	48

Table 9 – CD4 Testing for Adult/Adolescent HIV Cases by Current Age, Alive on 12/31/2009

Number of Adult/Adolescent Reported HIV Cases, Age 13+ at HIV Diagnosis, with or without an AIDS Diagnosis and Not Reported to Have Died as of 12/31/09 (Adult/Adolescent Total Living HIV Cases), Number and Percent by Age Group of Total Living HIV Cases with a Reported CD4 Test Result in the Previous 12 Months (Recent CD4 Test Result), and Median Count in Cells per Microliter and Percent Distribution by Age Group of Counts for the Last Recent CD4 Test Results, by Age on 12/31/09, as Reported by Name through 12/31/10

AGE ON 12/31/09	Adult/Adolescent Total Living HIV Cases							
	No.	Recent CD4 Test Result						
		No. with Test	% with Test	Median Count	<200	200-349	350-499	500+
13-19	46	6	13.0%	326	0.0%	***	***	***
20-29	897	186	20.7%	355	26.9%	22.6%	20.4%	30.1%
30-39	1,803	248	13.8%	340	31.9%	19.8%	23.4%	25.0%
40-49	4,656	635	13.6%	259	41.4%	18.7%	14.2%	25.7%
50-59	4,050	514	12.7%	322	33.7%	18.7%	19.1%	28.6%
60+	1,357	178	13.1%	320	31.5%	***	***	***
TOTAL	12,809	1,767	13.8%	310	35.1%	20.0%	17.4%	27.5%

Table 10 – HIV Viral Load Testing for Adult/Adolescent HIV Cases by Current Age, Alive on 12/31/2009

Number of Adult/Adolescent Reported HIV Cases, Age 13+ at HIV Diagnosis, with or without an AIDS Diagnosis and Not Reported to Have Died as of 12/31/09 (Adult/Adolescent Total Living HIV Cases), Number and Percent by Age Group of Total Living HIV Cases with a Reported HIV Viral Load Test Result in the Previous 12 Months (Recent Viral Load Test Result), Percent by Age Group of the Last Recent Viral Load Test Results that were Undetectable and the Median Detectable Result in Copies per Milliliter, by Age on 12/31/09, as Reported by Name through 12/31/10

AGE ON 12/31/09	Adult/Adolescent Total Living HIV Cases				
	No.	Recent Viral Load Test Result			
		No. with Test	% with Test	% Undetectable	Median Detectable
13-19	46	8	17.4%	0.0%	5,559
20-29	897	156	17.4%	5.1%	17,570
30-39	1,803	197	10.9%	12.7%	5,898
40-49	4,656	426	9.1%	11.0%	9,625
50-59	4,050	322	8.0%	18.3%	3,218
60+	1,357	90	6.6%	18.9%	1,785
TOTAL	12,809	1,199	9.4%	13.0%	7,327

Section V – Adult/Adolescent Cases by Demographics

Table 11 – Adult/Adolescent HIV Cases by Demographics, Diagnoses during 2009

Age 13+ Population Estimate for 7/1/09, Number, Percent of Total, and Rate per 100,000 Population of Adult/Adolescent Reported HIV Cases, Age 13+ at HIV Diagnosis, with or without an AIDS Diagnosis, Diagnosed with HIV during 1/1/09-12/31/09 (Adult/Adolescent Reported HIV Diagnoses), Number and Percent by Demographic of Reported HIV Diagnoses with a First Reported CD4 Test Result in the 12 Months following HIV Diagnosis (First CD4 Test Result) and Median Count of the First CD4 Test Results, Percent by Demographic of Reported HIV Diagnoses with a Reported CD4 Test Result or a Reported HIV Viral Load Test Result in the 3 Months following HIV Diagnosis (Linked to Care), and Percent by Demographic of Reported HIV Diagnoses with an AIDS Diagnosis in the 12 Months following HIV Diagnosis (Late HIV Diagnosis), by Sex at Birth, by Race/Ethnicity, and by Country of Birth, as Reported by Name through 12/31/10

SEX AT BIRTH	Population Age 13+	Adult/Adolescent Reported HIV Diagnoses							
	No.	No.	% of Total	Rate	First CD4 Test Result			% Linked to Care	% Late Diagnosis
					No. with Test	% with Test	Median Count		
Male	242,906	318	63.2%	130.9	184	57.9%	332	51.6%	23.3%
Female	288,618	185	36.8%	64.1	112	60.5%	331	54.1%	20.0%
TOTAL	531,524	503	100.0%	94.6	296	58.8%	332	52.5%	22.1%

RACE/ETHNICITY	Population Age 13+	Adult/Adolescent Reported HIV Diagnoses							
	No.	No.	% of Total	Rate	First CD4 Test Result			% Linked to Care	% Late Diagnosis
					No. with Test	% with Test	Median Count		
Hispanic	13,908	9	1.8%	64.7	5	55.6%	74	***	***
Non-Hispanic	517,616	494	98.2%	95.4	291	58.9%	333	52.6%	21.7%
American Indian/ Alaska Native, only	1,731	0	0.0%	0.0	--	--	--	--	--
Asian, only	10,599	2	0.4%	18.9	***	***	***	***	***
Black, only	329,333	430	85.5%	130.6	245	57.0%	332	50.9%	20.2%
Native Hawaiian/Other Pacific Islander, only	217	0	0.0%	0.0	--	--	--	--	--
White, only	170,822	52	10.3%	30.4	37	71.2%	412	61.5%	26.9%
Multiracial	4,914	10	2.0%	203.5	7	70.0%	149	70.0%	50.0%
TOTAL	531,524	503	100.0%	94.6	296	58.8%	332	52.5%	22.1%

COUNTRY OF BIRTH	Population Age 13+	Adult/Adolescent Reported HIV Diagnoses							
	No.	No.	% of Total	Rate	First CD4 Test Result			% Linked to Care	% Late Diagnosis
					No. with Test	% with Test	Median Count		
United States	497,049	449	89.3%	90.3	267	59.5%	328	54.1%	21.8%
Foreign-born	34,475	4	0.8%	11.6	***	***	***	***	***
Africa	--	1	0.2%	--	***	***	***	***	***
Asia	--	2	0.4%	--	***	***	***	***	***
Caribbean	--	0	0.0%	--	--	--	--	--	--
Central America	--	1	0.2%	--	***	***	***	***	***
Other	--	0	0.0%	--	--	--	--	--	--
Unknown	--	50	9.9%	--	25	50.0%	332	34.0%	20.0%
TOTAL	531,524	503	100.0%	94.6	296	58.8%	332	52.5%	22.1%

*** Data withheld due to low population and/or case counts

Table 12 – Adult/Adolescent AIDS Cases by Demographics, Diagnoses during 2009

Age 13+ Population Estimate for 7/1/09, Number, Percent of Total, and Rate per 100,000 Population of Adult/Adolescent Reported HIV Cases, Age 13+ at HIV Diagnosis, with an AIDS Diagnosis, Diagnosed with AIDS during 1/1/09-12/31/09 (Adult/Adolescent Reported AIDS Diagnoses), and Average Years from HIV Diagnosis to AIDS Diagnosis, and Percent by Demographic of Reported AIDS Diagnoses with an HIV Diagnosis in the 12 Months preceding AIDS Diagnosis (Late HIV Diagnosis), by Sex at Birth, by Race/Ethnicity, and by Country of Birth, as Reported by Name through 12/31/10

SEX AT BIRTH	Population Age 13+	Adult/Adolescent Reported AIDS Diagnoses				
	No.	No.	% of Total	Rate	Years from HIV Diagnosis	% Late HIV Diagnosis
Male	242,906	139	63.2%	57.2	3.2	53.2%
Female	288,618	81	36.8%	28.1	4	42.0%
TOTAL	531,524	220	100.0%	41.4	3.5	49.1%

RACE/ETHNICITY	Population Age 13+	Adult/Adolescent Reported AIDS Diagnoses				
	No.	No.	% of Total	Rate	Years from HIV Diagnosis	% Late HIV Diagnosis
Hispanic	13,908	7	3.2%	50.3	2.9	71.4%
Non-Hispanic	517,616	213	96.8%	41.2	3.5	48.4%
American Indian/ Alaska Native, only	1,731	0	0.0%	0.0	--	--
Asian, only	10,599	1	0.5%	9.4	***	***
Black, only	329,333	181	82.3%	55.0	3.8	45.9%
Native Hawaiian/Other Pacific Islander, only	217	0	0.0%	0.0	--	--
White, only	170,822	21	9.5%	12.3	1.9	66.7%
Multiracial	4,914	10	4.5%	203.5	***	***
TOTAL	531,524	220	100.0%	41.4	3.5	49.1%

COUNTRY OF BIRTH	Population Age 13+	Adult/Adolescent Reported AIDS Diagnoses				
	No.	No.	% of Total	Rate	Years from HIV Diagnosis	% Late HIV Diagnosis
United States	497,049	208	94.5%	41.8	3.7	46.2%
Foreign-born	34,475	3	1.4%	8.7	***	***
Africa	--	0	0.0%	--	--	--
Asia	--	1	0.5%	--	***	***
Caribbean	--	0	0.0%	--	--	--
Central America	--	2	0.9%	--	***	***
Other	--	0	0.0%	--	--	--
Unknown	--	9	4.1%	--	0.1	100.0%
TOTAL	531,524	220	100.0%	41.4	3.5	49.1%

*** Data withheld due to low population and/or case counts

Table 13 – Adult/Adolescent HIV Cases by Demographics, Alive on 12/31/2009

Age 13+ Population Estimate for 7/1/09, Number, Percent of Total, and Rate per 100,000 Population of Adult/Adolescent Reported HIV Cases, Age 13+ at HIV Diagnosis, with or without an AIDS Diagnosis and Not Reported to Have Died as of 12/31/09 (Adult/Adolescent Living HIV Cases without AIDS, Living HIV Cases with AIDS, and Total Living HIV Cases), and Ratio of People per Case (1 case in every X people) for Total Living HIV Cases, by Sex at Birth, by Race/Ethnicity, and by Country of Birth, as Reported by Name through 12/31/10

SEX AT BIRTH	Population Age 13+	Adult/Adolescent Living HIV Cases without AIDS			Adult/Adolescent Living HIV Cases with AIDS			Adult/Adolescent Total Living HIV Cases			
	No.	No.	%	Rate	No.	%	Rate	No.	%	Rate	Ratio (1 in X)
Male	242,906	3,459	61.5%	1,424.0	4,565	63.5%	1,879.3	8,024	62.6%	3,303.3	30
Female	288,618	2,161	38.5%	748.7	2,624	36.5%	909.2	4,785	37.4%	1,657.9	60
TOTAL	531,524	5,620	100.0%	1,057.3	7,189	100.0%	1,352.5	12,809	100.0%	2,409.9	41

RACE/ETHNICITY	Population Age 13+	Adult/Adolescent Living HIV Cases without AIDS			Adult/Adolescent Living HIV Cases with AIDS			Adult/Adolescent Total Living HIV Cases			
	No.	No.	%	Rate	No.	%	Rate	No.	%	Rate	Ratio (1 in X)
Hispanic	13,908	80	1.4%	575.2	108	1.5%	776.5	188	1.5%	1,351.7	74
Non-Hispanic	517,616	5,540	98.6%	1,070.3	7,081	98.5%	1,368.0	12,621	98.5%	2,438.3	41
American Indian/Alaska Native, only	1,731	***	***	***	***	***	***	***	***	***	***
Asian, only	10,599	17	0.3%	160.4	8	0.1%	75.5	25	0.2%	235.9	424
Black, only	329,333	4,797	85.4%	1,456.6	6,232	88.0%	1,892.3	11,029	87.4%	3,348.9	29
Native Hawaiian/Other Pacific Islander, only	217	***	***	***	***	***	***	***	***	***	***
White, only	170,822	654	11.6%	382.9	735	10.4%	430.3	1,389	11.0%	813.1	123
Multiracial	4,914	58	1.0%	1,180.3	98	1.4%	1,994.3	156	1.2%	3,174.6	31
TOTAL	531,524	5,620	100.0%	1,057.3	7,189	100.0%	1,352.5	12,809	100.0%	2,409.9	41

COUNTRY OF BIRTH	Population Age 13+	Adult/Adolescent Living HIV Cases without AIDS			Adult/Adolescent Living HIV Cases with AIDS			Adult/Adolescent Total Living HIV Cases			
	No.	No.	%	Rate	No.	%	Rate	No.	%	Rate	Ratio (1 in X)
United States	497,049	5,531	98.4%	1,112.8	7,062	98.2%	1,420.8	12,593	98.3%	2,533.6	39
Foreign-born	34,475	46	0.8%	133.4	118	1.6%	342.3	164	1.3%	475.7	210
Africa	--	12	0.2%	--	55	46.6%	--	67	40.9%	--	--
Asia	--	6	0.1%	--	6	5.1%	--	12	7.3%	--	--
Caribbean	--	6	0.1%	--	13	11.0%	--	19	11.6%	--	--
Central America	--	8	0.1%	--	25	21.2%	--	33	20.1%	--	--
Other	--	14	0.2%	--	19	16.1%	--	33	20.1%	--	--
Unknown	--	43	0.8%	--	9	0.1%	--	52	0.4%	--	--
TOTAL	531,524	5,620	100.0%	1,057.3	7,189	100.0%	1,352.5	12,809	100.0%	2,409.9	41

*** Data withheld due to low population and/or case counts

Table 14 – CD4 Testing for Adult/Adolescent HIV Cases by Demographics, Alive on 12/31/2009

Number of Adult/Adolescent Reported HIV Cases, Age 13+ at HIV Diagnosis, with or without an AIDS Diagnosis and Not Reported to Have Died as of 12/31/09 (Adult/Adolescent Total Living HIV Cases), Number and Percent by Demographic of Adult/Adolescent Total Living HIV Cases with a Reported CD4 Test Result in the Previous 12 Months (Recent CD4 Test Result), and Median Count in Cells per Microliter and Percent Distribution by Demographic of Counts for the Last Recent CD4 Test Results, by Sex at Birth, by Race/Ethnicity, and by Country of Birth, as Reported by Name through 12/31/10

SEX AT BIRTH	Adult/Adolescent Total Living HIV Cases							
	No.	Recent CD4 Test Result						
		No. with Test	% with Test	Median Count	<200	200-349	350-499	500+
Male	8,024	1,034	12.9%	301	36.5%	20.2%	17.6%	25.7%
Female	4,785	733	15.3%	326	33.3%	19.6%	17.1%	30.0%
TOTAL	12,809	1,767	13.8%	310	35.1%	20.0%	17.4%	27.5%

RACE/ETHNICITY	Adult/Adolescent Total Living HIV Cases							
	No.	Recent CD4 Test Result						
		No. with Test	% with Test	Median Count	<200	200-349	350-499	500+
Hispanic	188	27	14.4%	183	51.9%	***	33.3%	***
Non-Hispanic	12,621	1,740	13.8%	312	34.9%	20.2%	17.1%	27.8%
American Indian/ Alaska Native, only	***	***	***	***	***	***	***	***
Asian, only	25	***	***	***	***	***	***	***
Black, only	11,029	1,555	14.1%	313	34.5%	20.4%	17.2%	28.0%
Native Hawaiian/Other Pacific Islander, only	***	***	***	***	***	***	***	***
White, only	1,389	132	9.5%	347	33.3%	18.2%	18.9%	29.5%
Multiracial	156	49	31.4%	196	53.1%	20.4%	10.2%	16.3%
TOTAL	12,809	1,767	13.8%	310	35.1%	20.0%	17.4%	27.5%

COUNTRY OF BIRTH	Adult/Adolescent Total Living HIV Cases							
	No.	Recent CD4 Test Result						
		No. with Test	% with Test	Median Count	<200	200-349	350-499	500+
United States	12,593	1,738	13.8%	313	35.0%	19.9%	17.3%	27.8%
Foreign-born	164	18	11.0%	343	33.3%	***	27.8%	***
Africa	67	8	11.9%	298	***	***	***	***
Asia	12	***	***	***	***	***	***	***
Caribbean	19	0	0.0%	--	--	--	--	--
Central America	33	6	18.2%	376	***	0.0%	***	0.0%
Other	33	***	***	***	***	***	***	***
Unknown	52	11	21.2%	187	54.5%	***	***	0.0%
TOTAL	12,809	1,767	13.8%	310	35.1%	20.0%	17.4%	27.5%

*** Data withheld due to low population and/or case counts

Table 15 – HIV Viral Load Testing for Adult/Adolescent HIV Cases by Demographics, Alive on 12/31/2009

Number of Adult/Adolescent Reported HIV Cases, Age 13+ at HIV Diagnosis, with or without an AIDS Diagnosis and Not Reported to Have Died as of 12/31/09 (Adult/Adolescent Total Living HIV Cases), Number and Percent by Demographic of Adult/Adolescent Total Living HIV Cases with a Reported HIV Viral Load Test Result in the Previous 12 Months (Recent Viral Load Test Result), Percent by Demographic of the Last Recent Viral Load Test Results that were Undetectable and the Median Detectable Result in Copies per Milliliter, by Sex at Birth, by Race/Ethnicity, and by Country of Birth, as Reported by Name through 12/31/10

SEX AT BIRTH	Adult/Adolescent Total Living HIV Cases				
	No.	Recent Viral Load Test Result			
		No. with Test	% with Test	% Undetectable	Median Detectable
Male	8,024	681	8.5%	13.8%	10,285
Female	4,785	518	10.8%	12.0%	5,765
TOTAL	12,809	1,199	9.4%	13.0%	7,327

RACE/ETHNICITY	Adult/Adolescent Total Living HIV Cases				
	No.	Recent Viral Load Test Result			
		No. with Test	% with Test	% Undetectable	Median Detectable
Hispanic	188	21	11.2%	14.3%	95,029
Non-Hispanic	12,621	1,178	9.3%	13.0%	6,838
American Indian/ Alaska Native, only	***	***	***	***	***
Asian, only	25	***	***	***	***
Black, only	11,029	1,047	9.5%	12.6%	6,422
Native Hawaiian/ Other Pacific Islander, only	***	***	***	***	***
White, only	1,389	97	7.0%	16.5%	6,561
Multiracial	156	31	19.9%	12.9%	15,482
TOTAL	12,809	1,199	9.4%	13.0%	7,327

COUNTRY OF BIRTH	Adult/Adolescent Total Living HIV Cases				
	No.	Recent Viral Load Test Result			
		No. with Test	% with Test	% Undetectable	Median Detectable
United States	12,593	1,168	9.3%	13.0%	6,561
Foreign-born	164	16	9.8%	***	82,857
Africa	67	5	7.5%	***	***
Asia	12	***	***	***	***
Caribbean	19	0	0.0%	--	--
Central America	33	6	18.2%	***	***
Other	33	***	***	***	***
Unknown	52	15	28.8%	***	72,285
TOTAL	12,809	1,199	9.4%	13.0%	7,327

*** Data withheld due to low population and/or case counts

Section VI – HIV Cases by Expanded Demographics, Alive on 12/31/2009

Table 16 – Male HIV Cases by Current Age and Race/Ethnicity, Alive on 12/31/2009

Population Estimate for 7/1/09, Number, Rate per 100,000 Population, and Ratio of Males per Case (1 case in every X males) for Male Reported HIV Cases with or without an AIDS Diagnosis and Not Reported to Have Died as of 12/31/09 (Total Living HIV Cases) by Race/Ethnicity and Age on 12/31/09, as Reported by Name through 12/31/10

MALES						
AGE ON 12/31/09		RACE/ETHNICITY				TOTAL MALES BY AGE GROUP
		Hispanic	Non-Hispanic Black, only	Non-Hispanic White, only	Non-Hispanic Other Race	
<13 (Pediatric)	Population	2,729	35,546	13,427	2,296	53,998
	Cases	0	21	***	***	23
	Rate	0.0	59.1	***	***	42.6
	Ratio (1 in X)	--	1,692	***	***	2,347
13-19	Population	792	20,792	6,974	1,018	29,576
	Cases	***	70	***	0	79
	Rate	***	336.7	***	0.0	267.1
	Ratio (1 in X)	***	297	***	--	374
20-29	Population	2,121	31,906	16,494	2,175	52,696
	Cases	19	545	36	9	609
	Rate	895.8	1,708.1	218.3	413.8	1,155.7
	Ratio (1 in X)	111.6	58	458	241	86
30-39	Population	2,129	21,957	16,946	2,334	43,366
	Cases	32	711	132	22	897
	Rate	1,503.1	3,238.1	778.9	942.6	2,068.4
	Ratio (1 in X)	66.5	30	128	106	48
40-49	Population	1,101	23,584	13,629	1,019	39,333
	Cases	59	2,237	390	49	2,735
	Rate	5,358.8	9,485.2	2,861.5	4,808.6	6,953.4
	Ratio (1 in X)	18.7	10	34	20	14
50-59	Population	597	22,162	12,640	740	36,139
	Cases	***	2,386	325	***	2,767
	Rate	***	10,766	2,571	***	7,657
	Ratio (1 in X)	***	9	39	***	13
60+	Population	701	24,656	15,579	860	41,796
	Cases	***	841	145	***	1,020
	Rate	***	3,411	931	***	2,440
	Ratio (1 in X)	***	29	107	***	41
TOTAL MALES BY RACE/ ETHNICITY	Population	10,170	180,603	95,689	10,442	296,904
	Cases	153	6,811	1,038	128	8,130
	Rate	1,504.4	3,771.3	1,084.8	1,225.8	2,738.3
	Ratio (1 in X)	66.5	26	92	81	36

*** Data withheld due to low population and/or case counts

Table 17 – Female HIV Cases by Current Age and Race/Ethnicity, Alive on 12/31/2009

Population Estimate for 7/1/09, Number, Rate per 100,000 Population, and Ratio of Females per Case (1 case in every X females) for Female Reported HIV Cases with or without an AIDS Diagnosis and Not Reported to Have Died as of 12/31/09 (Total Living HIV Cases) by Race/Ethnicity and Age on 12/31/09, as Reported by Name through 12/31/10

FEMALES						
AGE ON 12/31/09		RACE/ETHNICITY				TOTAL FEMALES BY AGE GROUP
		Hispanic	Non-Hispanic Black, only	Non-Hispanic White, only	Non-Hispanic, Other Race	
<13 (Pediatric)	Population	2,638	34,312	12,740	2,206	51,896
	Cases	0	34	***	***	35
	Rate	0.0	99.1	***	***	67.4
	Ratio (1 in X)	--	1,009	***	***	1,482
13-19	Population	769	20,963	6,859	1,002	29,593
	Cases	***	80	***	***	83
	Rate	***	381.6	***	***	280.5
	Ratio (1 in X)	***	262	***	***	356
20-29	Population	1,967	35,145	17,719	2,366	57,197
	Cases	***	314	25	***	351
	Rate	***	893.4	141.1	***	613.7
	Ratio (1 in X)	***	111	708	***	167
30-39	Population	1,475	26,687	17,694	2,612	48,468
	Cases	9	785	97	16	907
	Rate	610.2	2,941.5	548.2	612.6	1871.3
	Ratio (1 in X)	163.9	34	182	163	53
40-49	Population	963	30,332	12,543	1,087	44,925
	Cases	***	1,715	150	***	1,921
	Rate	***	5,654.1	1,195.9	***	4,276
	Ratio (1 in X)	***	17	83	***	23
50-59	Population	554	30,450	12,530	978	44,512
	Cases	***	1,192	76	***	1,283
	Rate	***	3,915	607	***	2,882
	Ratio (1 in X)	***	26	165	***	35
60+	Population	739	40,699	21,215	1,270	63,923
	Cases	***	316	16	***	337
	Rate	***	776	75	***	527
	Ratio (1 in X)	***	129	1,326	***	190
TOTAL FEMALES BY RACE/ ETHNICITY	Population	9,105	218,588	101,300	11,521	340,514
	Cases	37	4,436	365	79	4,917
	Rate	406.4	2,029.4	360.3	685.7	1,444
	Ratio (1 in X)	246.1	49	277	145	69

*** Data withheld due to low population and/or case counts

Section VII – HIV Exposure Category

Table 18 – Adult/Adolescent HIV Cases by Exposure Category and Sex at Birth, Diagnoses during 2009

Number and Percent of Total with Exposure Category of Adult/Adolescent Reported HIV Cases, Age 13+ at HIV Diagnosis, with or without an AIDS Diagnosis, Diagnosed with HIV during 1/1/09-12/31/09 (Adult/Adolescent Reported HIV Diagnoses), Number and Percent by Exposure Category of Adult/Adolescent Reported HIV Diagnoses with a First Reported CD4 Test Result in the 12 Months following HIV Diagnosis (First CD4 Test Result) and Median Count of the First CD4 Test Results, Percent by Exposure Category of Adult/Adolescent Reported HIV Diagnoses with a Reported CD4 Test Result or a Reported HIV Viral Load Test Result in the 3 Months following HIV Diagnosis (Linked to Care), and Percent by Exposure Category of Adult/Adolescent Reported HIV Diagnoses with an AIDS Diagnosis in the 12 Months following HIV Diagnosis (Late HIV Diagnosis), by Exposure Category and by Sex at Birth and Exposure Category, as Reported by Name through 12/31/10

EXPOSURE CATEGORY	Adult/Adolescent Reported HIV Diagnoses					
	No.	% of Total with Exposure	First CD4 Test Result		% Linked to Care	% Late Diagnosis
			% with Test	Median Count		
Men who have Sex with Men (MSM)	81	36.2%	76.5%	344	74.1%	24.7%
Injection Drug Users (IDU)	54	24.1%	63.0%	333	55.6%	25.9%
Men who have Sex with Men and Inject Drugs (MSM/IDU)	***	***	***	***	***	***
Heterosexual Exposure (HET)	85	37.9%	65.9%	247	63.5%	31.8%
Other Exposures	***	***	***	***	***	***
No Reported Exposure	279		50.5%	332	41.6%	17.6%
TOTAL	503		58.8%	332	52.5%	22.1%
With Exposure	224	100.0%	69.2%	332	66.1%	27.7%

MALES EXPOSURE CATEGORY	Adult/Adolescent Reported HIV Diagnoses					
	No.	% of Total with Exposure	First CD4 Test Result		% Linked to Care	% Late Diagnosis
			% with Test	Median Count		
Men who have Sex with Men (MSM)	81	54.4%	76.5%	344	74.1%	24.7%
Injection Drug Users (IDU)	30	20.1%	60.0%	327	50.0%	26.7%
Men who have Sex with Men and Inject Drugs (MSM/IDU)	***	***	***	***	***	***
Heterosexual Exposure (HET)	34	22.8%	73.5%	216	73.5%	44.1%
Other Exposures	***	***	***	***	***	***
No Reported Exposure	169	53.1%	45.0%	339	35.5%	17.8%
TOTAL	318		57.9%	332	51.6%	23.3%
With Exposure	149	100.0%	72.5%	324	69.8%	29.5%

FEMALES EXPOSURE CATEGORY	Adult/Adolescent Reported HIV Diagnoses					
	No.	% of Total with Exposure	First CD4 Test Result		% Linked to Care	% Late Diagnosis
			% with Test	Median Count		
Injection Drug Users (IDU)	24	32.0%	66.7%	348	62.5%	25.0%
Heterosexual Exposure (HET)	51	68.0%	60.8%	350	56.9%	23.5%
Other Exposures	0	0.0%	--	--	--	--
No Reported Exposure	110		59.1%	328	50.9%	17.3%
TOTAL	185		60.5%	331	54.1%	20.0%
With Exposure	75	100.0%	62.7%	350	58.7%	24.0%

*** Data withheld due to low population and/or case counts

Table 19 – Adult/Adolescent AIDS Cases by Exposure Category and Sex at Birth, Diagnoses during 2009

Number and Percent of Total with Exposure Category of Adult/Adolescent Reported HIV Cases, Age 13+ at HIV Diagnosis, with an AIDS Diagnosis, Diagnosed with AIDS during 1/1/09-12/31/09 (Adult/Adolescent Reported AIDS Diagnoses), and Average Years from HIV Diagnosis to AIDS Diagnosis, and Percent by Exposure Category of Adult/Adolescent Reported AIDS Diagnoses with an HIV Diagnosis in the 12 Months preceding AIDS Diagnosis (Late HIV Diagnosis), by Exposure Category and by Sex at Birth and Exposure Category, as Reported by Name through 12/31/10

EXPOSURE CATEGORY	Adult/Adolescent Reported AIDS Diagnoses			
	No.	% of Total with Exposure	Years from HIV Diagnosis	% Late HIV Diagnosis
Men who have Sex with Men (MSM)	39	24.5%	2.5	61.5%
Injection Drug Users (IDU)	55	34.6%	5.3	27.3%
Men who have Sex with Men and Inject Drugs (MSM/IDU)	8	5.0%	7.4	12.5%
Heterosexual Exposure (HET)	57	35.8%	3.6	47.4%
Other Exposures	0	0.0%	--	--
No Reported Exposure	61		1.9	67.2%
TOTAL	220		3.5	49.1%
With Exposure	159	100.0%	4.1	42.1%

MALE EXPOSURE CATEGORY	Adult/Adolescent Reported AIDS Diagnoses			
	No.	% of Total with Exposure	Years from HIV Diagnosis	% Late HIV Diagnosis
Men who have Sex with Men (MSM)	39	38.6%	2.5	61.5%
Injection Drug Users (IDU)	29	28.7%	5.8	27.6%
Men who have Sex with Men and Inject Drugs (MSM/IDU)	8	7.9%	7.4	12.5%
Heterosexual Exposure (HET)	25	24.8%	2.3	64.0%
Other Exposures	0	0.0%	--	--
No Reported Exposure	38	27.3%	1.6	65.8%
TOTAL	139		3.2	53.2%
With Exposure	101	100.0%	3.8	48.5%

FEMALE EXPOSURE CATEGORY	Adult/Adolescent Reported AIDS Diagnoses			
	No.	% of Total with Exposure	Years from HIV Diagnosis	% Late HIV Diagnosis
Injection Drug Users (IDU)	26	44.8%	4.7	26.9%
Heterosexual Exposure (HET)	32	55.2%	4.6	34.4%
Other Exposures	0	0.0%	--	--
No Reported Exposure	23		2.4	69.6%
TOTAL	81		4.0	42.0%
With Exposure	58	100.0%	4.6	31.0%

*** Data withheld due to low population and/or case counts

Table 20 – Adult/Adolescent HIV Cases by Exposure Category and Sex at Birth, Alive on 12/31/2009

Number and Percent of Total with Exposure Category of Adult/Adolescent Reported HIV Cases, Age 13+ at HIV Diagnosis, with or without an AIDS Diagnosis and Not Reported to Have Died as of 12/31/09 (Adult/Adolescent Living HIV Cases without AIDS, Living HIV Cases with AIDS, and Total Living HIV Cases), by Exposure Category and by Sex at Birth and Exposure Category, as Reported by Name through 12/31/10

EXPOSURE CATEGORY	Adult/Adolescent Living HIV Cases without AIDS		Adult/Adolescent Living HIV Cases with AIDS		Adult/Adolescent Total Living HIV Cases	
	No.	% of Total with Exposure	No.	% of Total	No.	% of Total
Men who have Sex with Men (MSM)	965	24.7%	1,275	19.3%	2,240	21.3%
Injection Drug Users (IDU)	1,730	44.2%	3,345	50.6%	5,075	48.2%
Men who have Sex with Men and Inject Drugs (MSM/IDU)	143	3.7%	293	4.4%	436	4.1%
Heterosexual Exposure (HET)	1,066	27.2%	1,690	25.5%	2,756	26.2%
Other Exposures	8	0.2%	13	0.2%	21	0.2%
No Reported Exposure	1,708		573		2,281	
TOTAL	5,620		7,189		12,809	
With Exposure	3,912	100.0%	6,616	100.0%	10,528	100.0%

MALES EXPOSURE CATEGORY	Adult/Adolescent Living HIV Cases without AIDS		Adult/Adolescent Living HIV Cases with AIDS		Adult/Adolescent Total Living HIV Cases	
	No.	% of Total with Exposure	No.	% of Total	No.	% of Total
Men who have Sex with Men (MSM)	965	38.7%	1,275	30.0%	2,240	33.2%
Injection Drug Users (IDU)	1,063	42.7%	2,068	48.7%	3,131	46.4%
Men who have Sex with Men and Inject Drugs (MSM/IDU)	143	5.7%	293	6.9%	436	6.5%
Heterosexual Exposure (HET)	316	12.7%	609	14.3%	925	13.7%
Other Exposures	5	0.2%	4	0.1%	9	0.1%
No Reported Exposure	967	28.0%	316	6.9%	1,283	16.0%
TOTAL	3,459		4,565		8,024	
With Exposure	2,492	100.0%	4,249	100.0%	6,741	100.0%

FEMALES EXPOSURE CATEGORY	Adult/Adolescent Living HIV Cases without AIDS		Adult/Adolescent Living HIV Cases with AIDS		Adult/Adolescent Total Living HIV Cases	
	No.	% of Total with Exposure	No.	% of Total	No.	% of Total
Injection Drug Users (IDU)	667	47.0%	1,277	54.0%	1,944	51.3%
Heterosexual Exposure (HET)	750	52.8%	1,081	45.7%	1,831	48.3%
Other Exposures	3	0.2%	9	0.4%	12	0.3%
No Reported Exposure	741		257		998	
TOTAL	2,161		2,624		4,785	
With Exposure	1,420	100.0%	2,367	100.0%	3,787	100.0%

*** Data withheld due to low population and/or case counts

Table 21 – Adult/Adolescent HIV Cases by Exposure Category, Race/Ethnicity, and Sex at Birth, Alive on 12/31/2009

Number and Percent of Total with Exposure Category of Adult/Adolescent Reported HIV Cases, Age 13+ at HIV Diagnosis, with or without an AIDS Diagnosis and Not Reported to Have Died as of 12/31/09 (Adult/Adolescent Total Living HIV Cases), by Exposure Category and Selected Race/Ethnicity Categories, and by Sex at Birth, Exposure Category, and Selected Race/Ethnicity Categories, as Reported by Name through 12/31/10

EXPOSURE CATEGORY	Adult/Adolescent Total Living HIV Cases					
	Race/Ethnicity					
	Hispanic		Non-Hispanic, Black, only		Non-Hispanic, White, only	
	No.	% of Total with Exposure	No.	% of Total	No.	% of Total
Men who have Sex with Men (MSM)	49	34.3%	1,572	17.4%	576	49.0%
Injection Drug Users (IDU)	31	21.7%	4,598	50.9%	374	31.8%
Men who have Sex with Men and Inject Drugs (MSM/IDU)	9	6.3%	372	4.1%	43	3.7%
Heterosexual Exposure (HET)	54	37.8%	2,480	27.4%	180	15.3%
Other Exposures	0	0.0%	18	0.2%	3	0.3%
No Reported Exposure	45		1,989		213	
TOTAL	188		11,029		1,389	
With Exposure	143	100.0%	9,040	100.0%	1,176	100.0%

MALES EXPOSURE CATEGORY	Adult/Adolescent Total Living HIV Cases					
	Race/Ethnicity					
	Hispanic		Non-Hispanic, Black, only		Non-Hispanic, White, only	
	No.	% of Total with Exposure	No.	% of Total	No.	% of Total
Men who have Sex with Men (MSM)	49	41.5%	1,572	27.9%	576	65.2%
Injection Drug Users (IDU)	24	20.3%	2,884	51.2%	190	21.5%
Men who have Sex with Men and Inject Drugs (MSM/IDU)	9	7.6%	372	6.6%	43	4.9%
Heterosexual Exposure (HET)	36	30.5%	798	14.2%	71	8.0%
Other Exposures	0	0.0%	6	0.1%	3	0.3%
No Reported Exposure	35	22.9%	1,084	16.1%	146	14.2%
TOTAL	153		6,716		1,029	
With Exposure	118	100.0%	5,632	100.0%	883	100.0%

FEMALES EXPOSURE CATEGORY	Adult/Adolescent Total Living HIV Cases					
	Race/Ethnicity					
	Hispanic		Non-Hispanic, Black, only		Non-Hispanic, White, only	
	No.	% of Total with Exposure	No.	% of Total	No.	% of Total
Injection Drug Users (IDU)	7	28.0%	1,714	50.3%	184	62.8%
Heterosexual Exposure (HET)	18	72.0%	1,682	49.4%	109	37.2%
Other Exposures	0	0.0%	12	0.4%	0	0.0%
No Reported Exposure	10		905		67	
TOTAL	35		4,313		360	
With Exposure	25	100.0%	3,408	100.0%	293	100.0%

*** Data withheld due to low population and/or case counts

Table 22 – CD4 Testing for Adult/Adolescent HIV Cases by Exposure Category, Alive on 12/31/2009

Number of Adult/Adolescent Reported HIV Cases, Age 13+ at HIV Diagnosis, with or without an AIDS Diagnosis and Not Reported to Have Died as of 12/31/09 (Adult/Adolescent Total Living HIV Cases), Number and Percent by Exposure Category of Adult/Adolescent Total Living HIV Cases with a Reported CD4 Test Result in the Previous 12 Months (Recent CD4 Test Result), and Median Count in Cells per Microliter and Percent Distribution by Exposure Category of Counts for the Last Recent CD4 Test Results, by Exposure Category, as Reported by Name through 12/31/10

EXPOSURE CATEGORY	Adult/Adolescent Total Living HIV Cases							
	No.	Recent CD4 Test Result						
		No. with Test	% with Test	Median Count	<200	200-349	350-499	500+
Men who have Sex with Men (MSM)	2,240	255	11.4%	337	31.4%	21.2%	17.6%	29.8%
Injection Drug Users (IDU)	5,075	696	13.7%	278	40.4%	19.0%	15.1%	25.6%
Men who have Sex with Men and Inject Drugs (MSM/IDU)	436	66	15.1%	255	40.9%	22.7%	12.1%	24.2%
Heterosexual Exposure (HET)	2,756	423	15.3%	313	35.5%	18.0%	18.4%	28.1%
Other Exposures	21	0	0.0%	--	--	--	--	--
No Reported Exposure	2,281	327	14.3%	361	25.4%	23.2%	21.7%	29.7%
TOTAL	12,809	1,767	13.8%	310	35.1%	20.0%	17.4%	27.5%
With Exposure	10,528	1,440	13.7%	296	37.4%	19.2%	16.4%	27.0%

*** Data withheld due to low population and/or case counts

Table 23 – HIV Viral Load Testing for Adult/Adolescent HIV Cases by Exposure Category, Alive on 12/31/2009

Number of Adult/Adolescent Reported HIV Cases, Age 13+ at HIV Diagnosis, with or without an AIDS Diagnosis and Not Reported to Have Died as of 12/31/09 (Adult/Adolescent Total Living HIV Cases), Number and Percent by Exposure Category of Adult/Adolescent Total Living HIV Cases with a Reported HIV Viral Load Test Result in the Previous 12 Months (Recent Viral Load Test Result), Percent by Exposure Category of the Last Recent Viral Load Test Results that were Undetectable, and the Median Detectable Result in Copies per Milliliter, by Exposure Category, as Reported by Name through 12/31/10

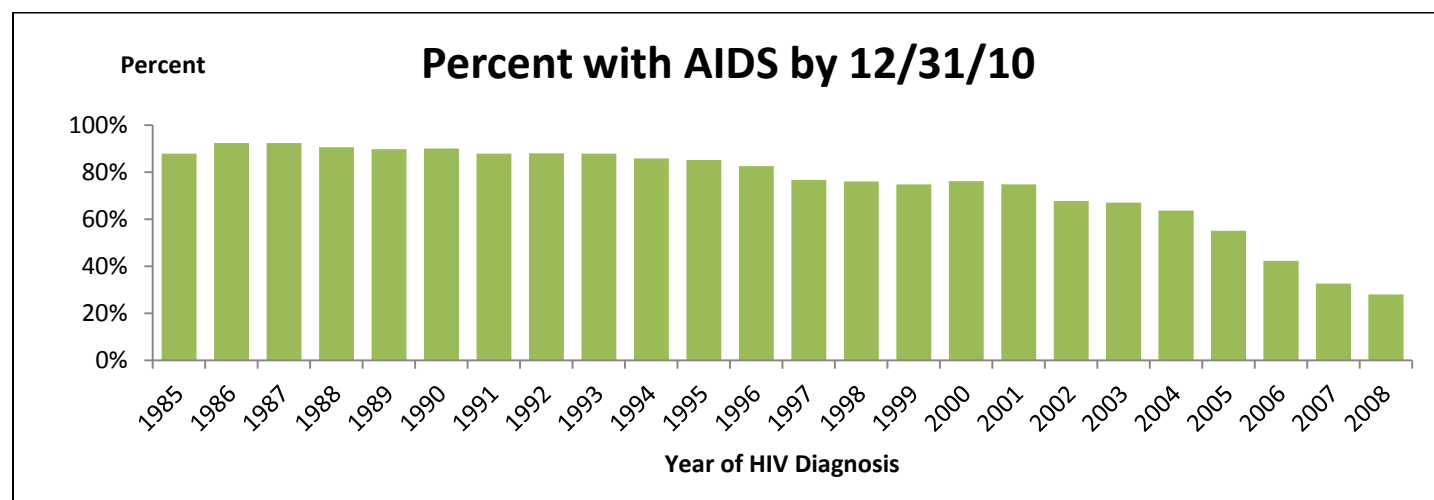
EXPOSURE CATEGORY	Adult/Adolescent Total Living HIV Cases			
	No.	Recent Viral Load Test Result		
		No. with Test	% Un-detectable	Median Detectable
Men who have Sex with Men (MSM)	2,240	185	12.4%	11,327
Injection Drug Users (IDU)	5,075	426	13.8%	7,300
Men who have Sex with Men and Inject Drugs (MSM/IDU)	436	41	19.5%	2,985
Heterosexual Exposure (HET)	2,756	298	13.4%	4,092
Other Exposures	21	2	0.0%	4,025
No Reported Exposure	2,281	247	10.5%	10,285
TOTAL	12,809	1,199	13.0%	7,327
With Exposure	10,528	952	13.7%	6,003

*** Data withheld due to low population and/or case counts

Section VIII – Disease Progression and Mortality

Figure 7 – Trends in Disease Progression by Year of HIV Diagnosis, 1985-2008

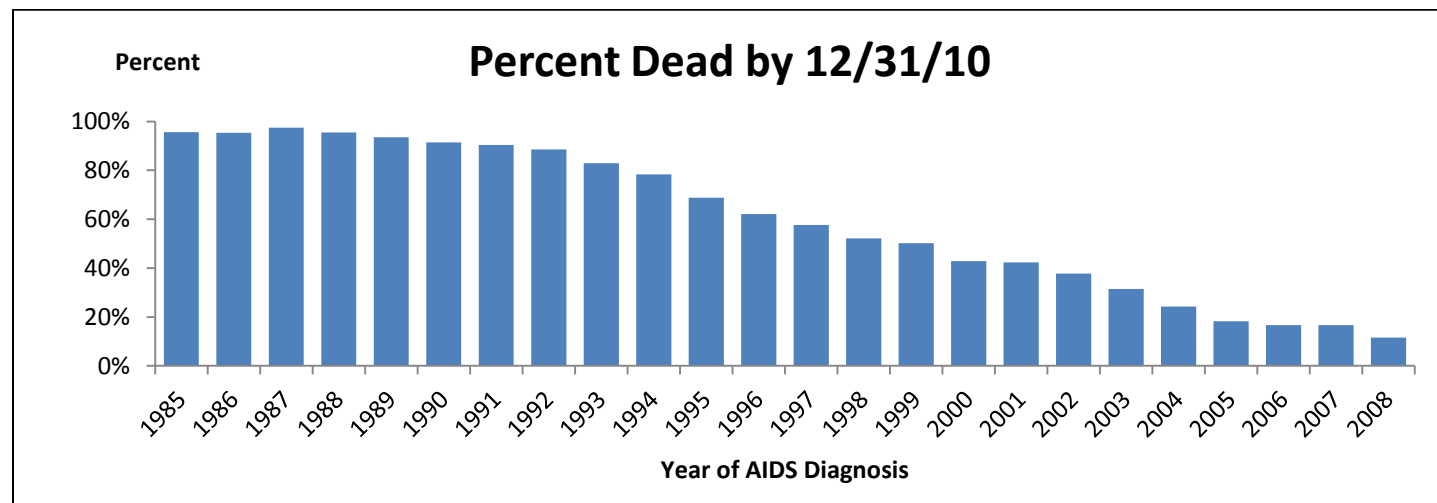
Number of Adult/Adolescent Reported HIV Cases, Age 13+ at HIV Diagnosis, with or without an AIDS Diagnosis by 12/31/08 (Adult/Adolescent Reported HIV Diagnoses), Number of Adult/Adolescent Reported HIV Cases with an AIDS Diagnosis by 12/31/10 (Reported AIDS Diagnoses), Percent by Year of HIV Diagnosis of Adult/Adolescent Reported HIV Diagnoses with a Reported AIDS Diagnosis by 12/31/10, the Average Years from HIV Diagnosis to AIDS Diagnosis for Cases with an AIDS Diagnosis, and the Percent by Year of HIV Diagnosis of Reported Adult/Adolescent HIV Diagnoses with a Reported AIDS Diagnosis at 1 Year, 2 Years, 5 Years, and 10 Years after HIV Diagnosis, by Year of HIV Diagnosis from 1985 through 2008, as Reported by Name through 12/31/10



YEAR OF HIV DIAGNOSIS	Adult/Adolescent Reported HIV Diagnoses							
	No.	Reported AIDS Diagnoses			Percent with AIDS by Years After HIV Diagnosis			
		No.	% with AIDS	Years from HIV to AIDS	1 Year	2 Years	5 Years	10 Years
<1985	127	121	95.3%	5.8	41.7%	41.7%	44.1%	74.8%
1985	280	246	87.9%	6.7	24.3%	25.4%	29.3%	71.8%
1986	388	358	92.3%	5.3	34.0%	34.0%	45.1%	79.1%
1987	541	500	92.4%	4.5	35.7%	36.8%	54.0%	82.6%
1988	850	770	90.6%	3.4	38.9%	42.1%	64.8%	85.6%
1989	1,122	1,007	89.8%	3.2	38.4%	43.9%	68.4%	84.0%
1990	1,185	1,068	90.1%	2.7	45.3%	52.2%	74.0%	85.6%
1991	1,318	1,157	87.8%	2.4	46.7%	56.8%	73.7%	82.9%
1992	1,305	1,149	88.0%	2.2	51.7%	59.8%	75.9%	83.4%
1993	1,236	1,087	87.9%	1.8	55.7%	64.0%	77.9%	85.3%
1994	1,098	942	85.8%	1.8	54.6%	62.7%	75.4%	82.5%
1995	1,048	893	85.2%	1.7	59.4%	64.5%	74.2%	82.3%
1996	967	798	82.5%	1.6	58.9%	63.8%	71.7%	79.8%
1997	1,012	776	76.7%	1.5	55.9%	60.7%	68.2%	74.2%
1998	954	725	76.0%	1.4	55.2%	59.3%	67.0%	74.6%
1999	892	667	74.8%	1.1	57.5%	62.2%	68.2%	74.1%
2000	829	631	76.1%	1.2	56.0%	60.7%	69.6%	--
2001	914	684	74.8%	0.9	59.2%	61.6%	70.1%	--
2002	948	643	67.8%	0.9	53.6%	56.9%	63.6%	--
2003	924	620	67.1%	0.8	53.9%	56.7%	62.6%	--
2004	954	607	63.6%	0.7	51.9%	55.5%	61.2%	--
2005	974	537	55.1%	0.6	45.8%	48.7%	--	--
2006	982	415	42.3%	0.5	35.0%	37.5%	--	--
2007	913	299	32.7%	0.5	27.1%	29.4%	--	--
2008	838	235	28.0%	0.3	24.1%	--	--	--
TOTAL	22,599	16,935	74.9%	2.0	48.1%	52.9%	63.8%	72.1%

Figure 8 – Trends in Survival Times by Year of AIDS Diagnosis, 1985-2008

Number of Adult/Adolescent Reported HIV Cases, Age 13+ at HIV Diagnosis, with an AIDS Diagnosis by 12/31/08 (Adult/Adolescent Reported AIDS Diagnoses), Number of Adult/Adolescent Reported AIDS Diagnosis Reported to Have Died of Any Cause by 12/31/10 (Reported AIDS Deaths), Percent by Year of AIDS Diagnosis of Adult/Adolescent Reported AIDS Diagnoses with a Reported AIDS Death (Percent Dead) by 12/31/10, the Average Years from AIDS Diagnosis to Death for Cases that have Died, and the Percent by Year of AIDS Diagnosis of Adult/Adolescent Reported AIDS Diagnoses Not Reported to Have Died (Percent Alive) at 1 Year, 2 Years, 5 Years, and 10 Years after AIDS Diagnosis, by Year of AIDS Diagnosis from 1985 through 2008, as Reported by Name through 12/31/10

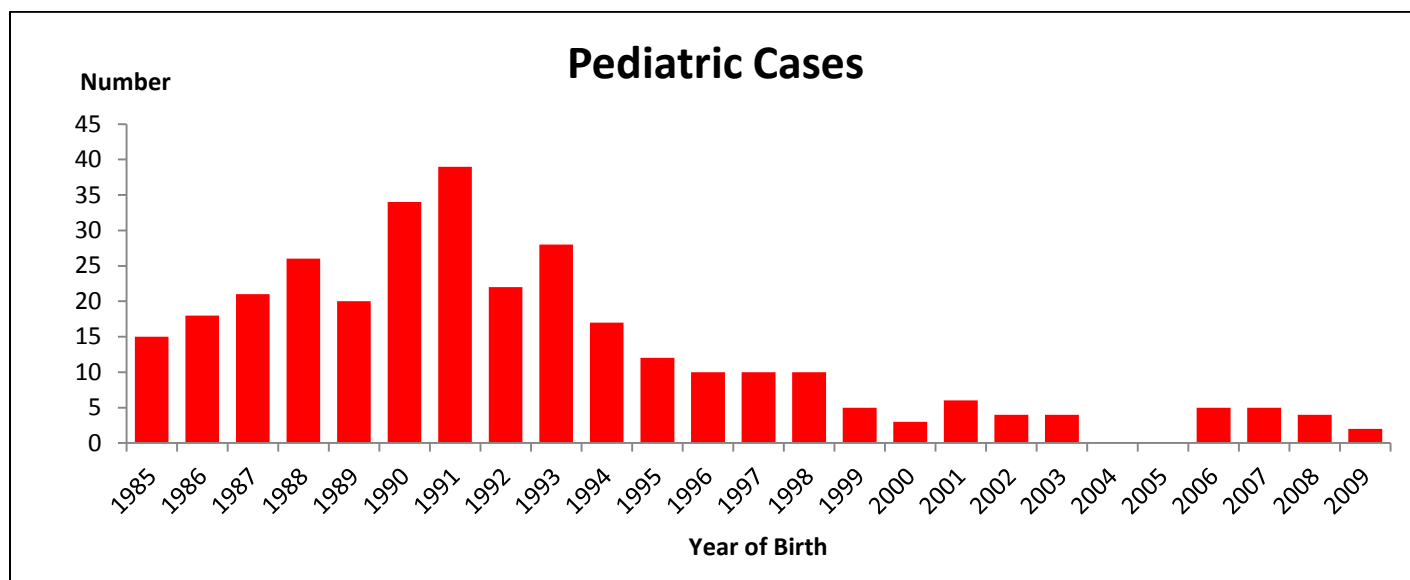


YEAR OF AIDS DIAGNOSIS	Adult/Adolescent Reported AIDS Diagnoses							
	No.	Reported AIDS Deaths			Percent Alive by Years After AIDS Diagnosis			
		No.	% Dead	Years from AIDS to Death	1 Year	2 Years	5 Years	10 Years
<1985	54	51	94.4%	2.3	53.7%	33.3%	16.7%	11.1%
1985	68	65	95.6%	1.8	44.1%	29.4%	10.3%	7.4%
1986	130	124	95.4%	2.1	48.5%	30.0%	14.6%	10.8%
1987	195	190	97.4%	2.0	60.5%	33.8%	10.8%	4.6%
1988	332	317	95.5%	2.0	59.6%	38.6%	13.0%	6.6%
1989	432	404	93.5%	2.0	60.2%	38.4%	16.0%	8.6%
1990	629	575	91.4%	2.5	64.5%	45.5%	21.1%	13.0%
1991	778	703	90.4%	2.3	67.1%	45.9%	18.4%	12.5%
1992	1,091	965	88.5%	2.4	69.2%	49.4%	21.8%	15.7%
1993	1,248	1,034	82.9%	3.0	77.3%	56.4%	33.8%	21.7%
1994	1,139	892	78.3%	3.0	76.7%	57.9%	37.8%	25.1%
1995	1,113	766	68.8%	3.3	78.3%	65.9%	48.1%	34.9%
1996	1,065	661	62.1%	3.7	81.8%	74.6%	57.6%	42.7%
1997	937	540	57.6%	3.6	85.3%	76.5%	60.1%	45.8%
1998	831	433	52.1%	3.5	87.1%	79.7%	62.7%	50.3%
1999	819	411	50.2%	3.3	86.3%	79.0%	62.5%	51.9%
2000	707	303	42.9%	3.0	85.7%	79.9%	66.6%	--
2001	807	341	42.3%	2.5	85.3%	77.8%	64.8%	--
2002	727	274	37.7%	2.4	86.1%	79.0%	68.5%	--
2003	736	231	31.4%	1.7	83.8%	79.5%	71.1%	--
2004	734	178	24.3%	1.7	88.3%	84.1%	77.7%	--
2005	695	127	18.3%	1.5	90.5%	88.5%	--	--
2006	577	96	16.6%	1.4	92.0%	88.7%	--	--
2007	436	73	16.7%	1.0	89.7%	86.9%	--	--
2008	401	46	11.5%	0.6	91.5%	--	--	--
TOTAL	16,681	9,800	58.7%	2.7	79.7%	68.1%	51.8%	43.6%

Section IX – Pediatric Cases

Figure 9 – Trends in Pediatric HIV Cases, 1985-2009

Number of Pediatric Reported HIV Cases, Age <13 at HIV Diagnosis, with or without an AIDS Diagnosis (Pediatric Reported HIV Diagnoses) by Year of Birth, by Year of HIV Diagnosis, by Year of AIDS Diagnosis, and by Year of Death Due to Any Cause, and Number of Pediatric Reported HIV Cases, Age <13 at HIV Diagnosis, with or without an AIDS Diagnosis and Not Reported to have Died as of December 31st of Each Year (Pediatric Total Living HIV Cases) from 1985 through 2009, as Reported by Name through 12/31/10



YEAR	Pediatric Reported HIV Cases				Pediatric Total Living HIV Cases
	No. by Year of Birth	No. by Year of HIV Diagnosis	No. by Year of AIDS Diagnosis	No. by Year of Death	No. Alive on 12/31 of Each Year
<1985	15	2	1	0	
1985	15	5	4	1	7
1986	18	6	5	3	10
1987	21	13	8	5	18
1988	26	16	11	3	32
1989	20	20	14	3	49
1990	34	29	15	4	75
1991	39	33	21	8	101
1992	22	34	19	8	130
1993	28	37	22	10	156
1994	17	22	16	10	167
1995	12	16	14	8	173
1996	10	14	7	12	176
1997	10	6	3	4	177
1998	10	16	7	3	190
1999	5	13	5	3	200
2000	3	6	2	0	206
2001	6	9	7	3	211
2002	4	2	2	2	211
2003	4	2	0	2	212
2004	0	2	2	2	212
2005	0	0	1	0	212
2006	5	3	2	0	214
2007	5	20	3	3	231
2008	4	7	5	3	236
2009	2	2	1	0	238
TOTAL	335	335	197	100	--

Table 24 – Pediatric HIV Cases by ZIP Code, Alive on 12/31/2009

Number and Percent of Total of Pediatric Reported HIV Cases, Age <13 at HIV Diagnosis, with or without an AIDS Diagnosis and Not Reported to have Died as of 12/31/09 (Pediatric Total Living HIV Cases) by ZIP Code of Residence at the Latter of HIV or AIDS Diagnosis, as Reported by Name through 12/31/10

ZIP CODE AT DIAGNOSIS	Pediatric Total Living HIV Cases	
		No.
21201	6	2.5%
21202	14	5.9%
21205	9	3.8%
21206	10	4.2%
21207	6	2.5%
21208	0	0.0%
21209	***	***
21210	0	0.0%
21211	***	***
21212	***	***
21213	26	10.9%
21214	***	***
21215	29	12.2%
21216	14	5.9%
21217	28	11.8%
21218	23	9.7%
21222	0	0.0%
21223	20	8.4%
21224	13	5.5%
21225	***	***
21226	0	0.0%
21227	***	***
21228	0	0.0%
21229	6	2.5%
21230	***	***
21231	***	***
21234	***	***
21236	0	0.0%
21237	0	0.0%
21239	11	4.6%
Missing	1	0.4%
TOTAL	238	100.0%

*** Data withheld due to low population and/or case counts

Table 25 – Pediatric HIV Cases by Demographics, Alive on 12/31/2009

Number and Percent of Total of Pediatric Reported HIV Cases, Age <13 at HIV Diagnosis, with or without an AIDS Diagnosis and Not Reported to have Died as of 12/31/09 (Pediatric Total Living HIV Cases) by Sex at Birth and by Race/Ethnicity, as Reported by Name through 12/31/10

SEX AT BIRTH	Pediatric Total Living HIV Cases	
	No.	%
Male	106	44.5%
Female	132	55.5%
TOTAL	238	100.0%

RACE/ETHNICITY	Pediatric Total Living HIV Cases	
	No.	%
Hispanic	***	***
Non-Hispanic	***	***
American Indian/ Alaska Native, only	0	0.0%
Asian, only	0	0.0%
Black, only	218	91.6%
Native Hawaiian/Other Pacific Islander, only	0	0.0%
White, only	14	5.9%
Multiracial	***	***
TOTAL	238	100.0%

*** Data withheld due to low population and/or case counts